



BANK OF TANZANIA

CONSOLIDATED ZONAL ECONOMIC PERFORMANCE REPORT FOR THE QUARTER ENDING SEPTEMBER 2022

Volume 7 No. 3



Consolidated Zonal Economic Performance Report

BANK OF TANZANIA

CONSOLIDATED ZONAL ECONOMIC PERFORMANCE REPORT FOR THE QUARTER ENDING SEPTEMBER 2022

© Bank of Tanzania.

All rights reserved. This report is intended for general information only and not to serve as financial or other advice. No content of this publication may be quoted or reproduced in any form without fully acknowledging the Bank of Tanzania Consolidated Zonal Economic Performance Report as the source. The Bank of Tanzania has taken every precaution to ensure accuracy of information and therefore, shall not be liable to any person for inaccurate information or opinion contained in this publication.

For any inquiry please contact:
Director of Economic Research and Policy
Bank of Tanzania, 16 Jakaya Kikwete Road 40184
P.O. Box 2302, Dodoma, Tanzania
Email: botcommunications@bot.go.tz

This report is available at <http://www.bot.go.tz>

ISSN 2546-2008



Consolidated Zonal Economic Performance Report

Contents

| | |
|--|----|
| Executive Summary..... | 3 |
| 1.0 ECONOMIC DEVELOPMENTS | 5 |
| 1.1 Inflation Developments | 5 |
| 1.2 Wholesale Prices of Selected Food Crops..... | 6 |
| 1.3 Fuel Pump Prices | 7 |
| 2.0 FOOD SUPPLY SITUATION | 10 |
| 2.1 Food Stock..... | 10 |
| 3.0 SECTORAL PERFORMANCE | 11 |
| 3.1 Agriculture..... | 11 |
| 3.2 Manufacturing..... | 15 |
| 3.3 Mining | 17 |
| 3.4 Tourism..... | 19 |
| 3.5 Energy | 21 |
| 4.0 GOVERNMENT REVENUE PERFORMANCE..... | 24 |
| 4.1 Tax Revenue Collections | 24 |
| 4.2 Local Government Revenue Collections..... | 25 |
| 5.0 TRADE | 26 |
| 5.1 Cross Border Trade | 26 |
| 5.2 Ports Performance..... | 27 |
| 5.3 Airports Performance..... | 27 |
| 6.0 FINANCIAL SECTOR DEVELOPMENTS..... | 28 |
| 6.1 Bank Deposits and Loans | 28 |
| 6.2 Agent Banking Transactions | 30 |
| 7.0 STATISTICAL ANNEXES | 31 |



Consolidated Zonal Economic Performance Report

List of Tables

| | |
|--|----|
| Table 1.1: Annual Average Headline Inflation..... | 5 |
| Table 1.2: Average Wholesale Prices of Selected Food Crops..... | 7 |
| Table 1.3: Average Fuel Pump Prices | 8 |
| Table 2.1: Stock of Food Held by National Food Reserve Agency | 10 |
| Table 3.1: Cash Crops Procurement..... | 11 |
| Table 3.2: Livestock Sold in Registered Markets..... | 12 |
| Table 3.3 Hides and Skins | 13 |
| Table 3.4: Fish Sold in Registered Markets | 14 |
| Table 3.5: Value of Forest Products..... | 15 |
| Table 3.6a: Value of Selected Manufactured Commodities by Zone | 16 |
| Table 3.6b: Value of Selected Manufactured Commodities by Type | 16 |
| Table 3.7a: Value of Selected Mineral Recovery..... | 18 |
| Table 3.7b: Value of Mineral Recovery by Zone..... | 18 |
| Table 3.8: Value of Minerals Sold at Market Centres | 19 |
| Table 3.9: Earnings and Number of Visitors to National Parks | 20 |
| Table 3.10: Earnings and Number of Visitors to Museums | 20 |
| Table 3.11: Electricity Generation | 21 |
| Table 3.12: Electricity Generation by Source..... | 22 |
| Table 3.13: Natural Gas Production and Consumption | 23 |
| Table 4.1: Tax Revenue Performance by Zone | 24 |
| Table 4.2: Tax Revenue Performance by Category | 25 |
| Table 4.3: Local Government Revenue Performance by Zone | 26 |
| Table 5.1: Cross Border Trade..... | 26 |
| Table 5.2: Ports Performance | 27 |
| Table 5.3: Airports Performance | 28 |
| Table 6.1: Bank Deposits | 28 |
| Table 6.2: Bank Loans | 29 |
| Table 6.3: Percentage Share of Banks' Lending by Activity as at 30 th September 2022..... | 29 |
| Table 6.4: Agent Banking Transactions | 30 |



Executive Summary

All zones experienced a rise in headline inflation relative to the corresponding quarter in 2021, save for Lake and South Eastern zones. The rise in inflation was mainly driven by increase in prices of both food and non-food items, while slowdown of inflation in the Lake and South Eastern zones was on account of a decrease in prices of non-food items including clothing and footwear, housing, restaurant and accommodation. Average wholesale prices of selected food crops increased, largely due to high demand from neighbouring countries coupled with increasing transportation costs following a rise in fuel prices, consistent with developments in the world market.

Performance of selected economic activities improved relative to the corresponding quarter in 2021. In agriculture, volume of procured seed cotton, coffee and sisal increased, largely associated with favourable weather conditions for the crops and growing global demand. Fisheries and forestry sub sectors also registered improvements largely owing to favourable conditions for fishing activities and increased demand for forest products.

The value of selected manufactured goods increased partly explained by growing demand from domestic and regional markets. In the mining sector, the value of mineral recovery improved across all zones mostly driven by gold and coal. Tourism activities continued to improve, as indicated by growth in number of visitors, partly reflecting enhanced promotional efforts by the Government and the private sector. Volume of electricity generated was also higher than in the similar quarter of 2021, attributable to increased capacity utilization of gas and diesel powered plants that compensated the decline in hydro-power generation. Similarly, natural gas production improved on account of increased usage largely by Tanzania Electric Supply Company Limited.

Tax revenue collections were broadly in line with the target at 99.1 percent, largely explained by continuous public awareness campaigns and recovery of economic activities from the effects of COVID-19 pandemic. Local Government Authorities' revenue collections were equivalent to 90.1 percent of the target, partly associated with recovery of economic activities and increased usage of point-of-sale devices.

Trade surplus with neighbouring countries narrowed due to a decline in exports and increase in imports in the Northern zone. Volume of cargo handled at major sea and lake ports increased, largely associated with ongoing improvement of ports' infrastructure. Notable volume increases was recorded in exports of coal and cement, and in petroleum products imports.



Consolidated Zonal Economic Performance Report

Deposits held by banks improved, mainly attributed to ongoing deposit mobilization measures adopted by banks, enhanced use of agent banking and digital banking platforms. Correspondingly, banks' gross loans to various economic activities improved, largely attributed to measures taken to improve liquidity in the banking system, recovery of economic activities after the effects of the pandemic as well as improvement in the business environment.



1.0 ECONOMIC DEVELOPMENTS

1.1 Inflation Developments

During the quarter ending September 2022, headline inflation increased in all zones compared with the corresponding quarter in 2021, except for Lake and South Eastern zones (Table 1.1 and Chart 1.1). The rise in inflation was driven by increase in prices of both food and non-food items. Main items that contributed to the increase in food inflation were maize and rice, whereas for non-food inflation, they were transport; household equipment; alcoholic beverages and tobacco; water, electricity and fuel; and housing. In Lake and South Eastern zones, the slowdown in inflation was largely driven by a decrease in prices of non-food items falling under clothing and footwear, housing, restaurant and accommodation sub-groups.

Table 1.1: Annual Average Headline Inflation

| Quarter ending | Percent | | | | | | |
|----------------|----------|---------|---------------|------|----------|---------------|--------------------|
| | National | Central | Dar es Salaam | Lake | Northern | South Eastern | Southern Highlands |
| Sep-21 | 3.9 | 0.4 | 2.2 | 7.7 | 2.7 | 4.2 | 4.9 |
| Dec-21 | 4.1 | 2.4 | 3.8 | 6.6 | 3.3 | 4.0 | 3.3 |
| Mar-22 | 3.8 | 2.6 | 3.1 | 5.9 | 2.7 | 3.6 | 3.7 |
| Jun-22 | 4.1 | 3.6 | 4.8 | 6.4 | 1.9 | 3.0 | 5.0 |
| Sep-22 | 4.7 | 4.8 | 5.6 | 5.4 | 3.2 | 2.3 | 5.7 |

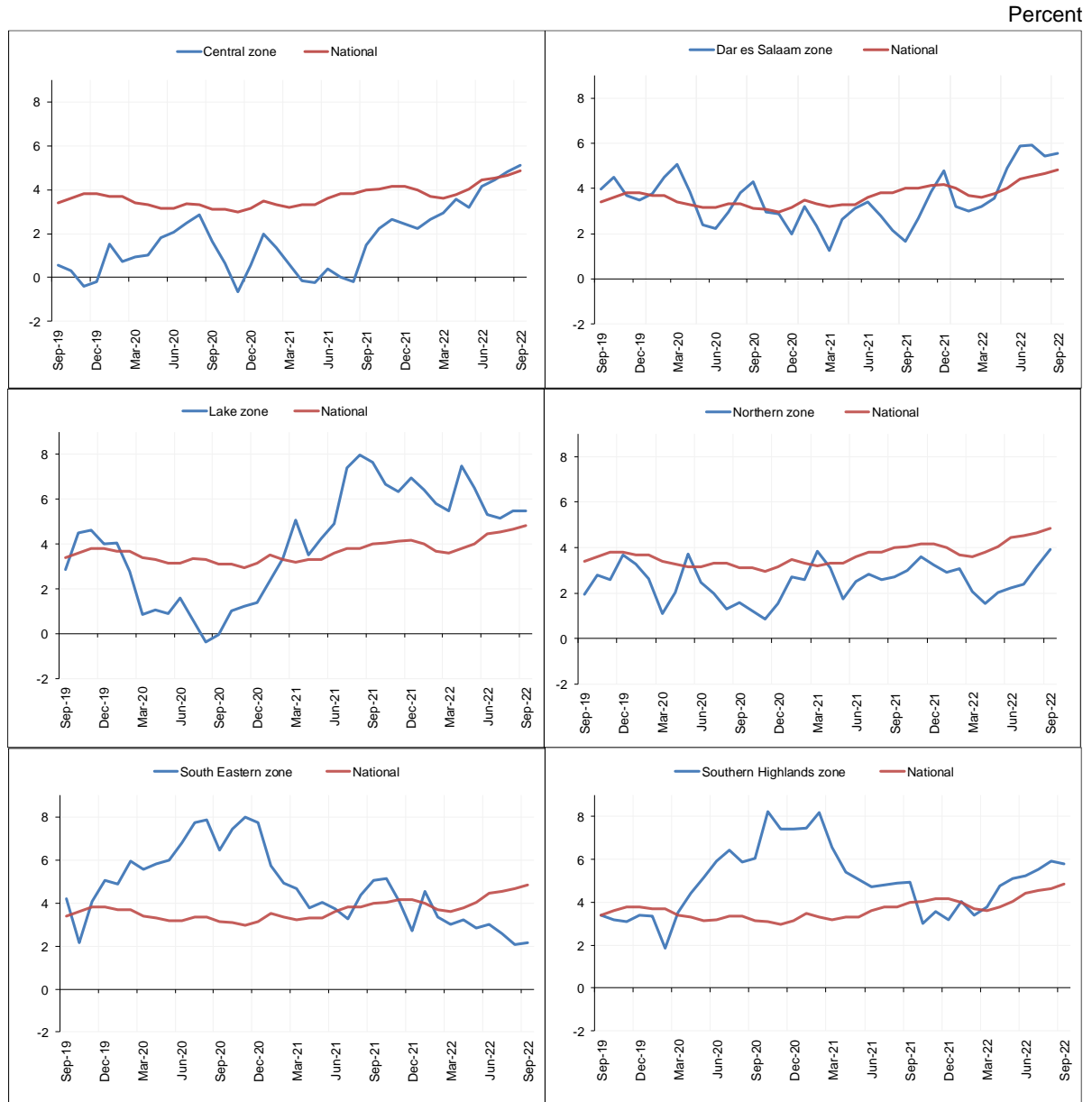
Source: National Bureau of Statistics and Bank of Tanzania computations

Note: Inflation is computed using different weights across zones hence average inflation of all zones may not be the same as the national inflation



Consolidated Zonal Economic Performance Report

Chart 1.1: Year-on-Year Headline Inflation



Source: National Bureau of Statistics and Bank of Tanzania computations

1.2 Wholesale Prices of Selected Food Crops

Average wholesale prices of selected food crops¹ remained high, with maize and rice recording the highest increase compared with the corresponding quarter in 2021 (Table 1.2). The increase in prices was associated with high demand, especially from neighbouring countries, as well as increased transportation costs following the rise in prices of fuel. Low food production in some areas during 2021/22 crop season relative to the preceding crop season also exerted pressure on food prices.

¹ Include maize, beans, finger millet, rice, round potatoes and sorghum.



Consolidated Zonal Economic Performance Report

Table 1.2: Average Wholesale Prices of Selected Food Crops

| Quarter ending | Crop | TZS per 100 kg | | | | | | |
|----------------|----------------|----------------|---------------|-----------|-----------|---------------|--------------------|-----------|
| | | Central | Dar es Salaam | Lake | Northern | South Eastern | Southern Highlands | Average |
| Sep-21 | Beans | 185,169.7 | 207,835.8 | 165,109.2 | 161,276.7 | 187,633.7 | 177,777.8 | 180,800.5 |
| | Bulrush millet | 76,690.0 | 78,897.4 | n.a | 98,386.5 | n.a | n.a | 84,658.0 |
| | Finger millet | 144,558.8 | 157,890.4 | n.a | 147,306.5 | 174,382.3 | 144,786.4 | 153,784.9 |
| | Maize | 40,633.4 | 51,610.1 | 52,000.5 | 48,806.2 | 47,165.7 | 42,111.1 | 47,054.5 |
| | Rice | 140,990.3 | 153,787.7 | 121,254.8 | 154,299.2 | 159,589.6 | 135,166.7 | 144,181.4 |
| | Round potatoes | 71,654.0 | 55,159.2 | 76,382.8 | 57,272.1 | 68,881.5 | 44,000.0 | 62,224.9 |
| | Sorghum | 92,600.8 | 83,397.4 | 104,840.2 | 88,685.6 | 121,116.9 | 80,000.0 | 95,106.8 |
| | Wheat | 157,182.7 | 129,551.3 | n.a | 120,822.6 | n.a | 117,198.9 | 131,188.8 |
| Jun- 22 | Beans | 196,287.6 | 226,674.0 | 178,442.7 | 184,830.1 | 206,759.0 | 188,315.7 | 196,884.8 |
| | Bulrush millet | 101,889.5 | 102,893.9 | n.a | 101,781.7 | n.a | n.a | 102,188.4 |
| | Finger millet | 163,086.0 | 174,746.2 | n.a | 159,737.3 | 187,748.7 | 169,034.9 | 170,870.6 |
| | Maize | 68,568.4 | 85,444.4 | 73,807.9 | 78,306.2 | 70,723.9 | 54,113.2 | 71,827.4 |
| | Rice | 205,728.1 | 211,528.2 | 184,972.0 | 206,673.0 | 209,608.8 | 164,587.7 | 197,182.9 |
| | Round potatoes | 89,146.5 | 69,445.2 | 86,628.7 | 81,304.4 | 76,011.1 | 54,000.2 | 76,089.3 |
| | Sorghum | 98,618.8 | 119,580.8 | 115,688.9 | 103,696.2 | 187,637.2 | 163,921.8 | 131,523.9 |
| | Wheat | 185,811.1 | 219,351.9 | n.a | 178,751.8 | n.a | 171,189.3 | 188,776.0 |
| Sep-22 | Beans | 232,983.3 | 248,541.7 | 198,207.2 | 214,442.0 | 231,679.8 | 203,840.0 | 221,615.7 |
| | Bulrush millet | 119,960.3 | 110,416.7 | n.a | 99,740.0 | n.a | n.a | 110,039.0 |
| | Finger millet | 181,388.9 | 170,833.3 | n.a | 143,321.1 | 190,208.3 | 195,000.0 | 176,150.3 |
| | Maize | 84,244.8 | 99,507.5 | 102,661.6 | 95,058.6 | 91,238.6 | 90,000.0 | 93,785.2 |
| | Rice | 241,567.3 | 223,084.9 | 210,793.2 | 227,462.0 | 221,216.4 | 285,000.0 | 234,854.0 |
| | Round potatoes | 114,940.5 | 91,645.8 | 89,432.1 | 89,496.3 | 88,296.5 | 66,027.0 | 89,973.0 |
| | Sorghum | 114,940.5 | 110,000.0 | 133,364.2 | 98,984.9 | 185,510.1 | 161,125.0 | 133,987.4 |
| | Wheat | 192,216.9 | 204,583.3 | n.a | 195,202.8 | n.a | 174,688.0 | 191,672.8 |

Source: Ministry of Investment, Industry and Trade; Regional Authorities; and Bank of Tanzania computations
 Note: n.a denotes not available

1.3 Fuel Pump Prices

All zones recorded increases in average retail pump prices of petroleum products during the quarter under review, consistent with world market prices (Table 1.3). The movement in pump prices corresponds to continued recovery of the global economy from effects of COVID-19 pandemic which increased demand for fuel, coupled with supply disruptions caused by war in Ukraine. Pump prices would have been much higher if the Government did not intervene by providing fuel subsidy since June 2022. Chart 1.2 presents monthly average pump price movements in the past three years.



Consolidated Zonal Economic Performance Report

Table 1.3: Average Fuel Pump Prices

| Zone | | Quarter ending | | | | TZS per litre |
|--------------------|----------|----------------|---------|---------|---------|-------------------------------------|
| | | Sep-21 | Mar-22 | Jun-22 | Sep-22 | Percentage change, Sep-21 to Sep-22 |
| Central | Petrol | 2,475.8 | 2,577.4 | 3,071.7 | 3,228.3 | 30.4 |
| | Diesel | 2,296.7 | 2,421.6 | 3,097.6 | 3,236.2 | 40.9 |
| | Kerosene | 2,184.3 | 2,338.6 | 3,087.3 | 3,413.2 | 56.3 |
| Dar es Salaam | Petrol | 2,417.2 | 2,502.7 | 3,001.0 | 3,346.7 | 38.5 |
| | Diesel | 2,235.0 | 2,346.3 | 3,027.0 | 3,262.3 | 46.0 |
| | Kerosene | 2,150.2 | 2,244.7 | 3,029.7 | 3,655.7 | 70.0 |
| Lake | Petrol | 2,554.0 | 2,663.8 | 3,175.2 | 3,295.3 | 29.0 |
| | Diesel | 2,381.9 | 2,516.3 | 3,196.6 | 3,283.5 | 37.8 |
| | Kerosene | 2,477.0 | 2,529.9 | 3,118.4 | 3,513.3 | 41.8 |
| Northern | Petrol | 2,520.9 | 2,537.9 | 3,053.0 | 3,271.9 | 29.8 |
| | Diesel | 2,344.8 | 2,416.1 | 3,112.1 | 3,271.5 | 39.5 |
| | Kerosene | 2,259.3 | 2,390.4 | 3,216.6 | 3,678.7 | 62.8 |
| South Eastern | Petrol | 2,448.4 | 2,555.5 | 2,975.6 | 3,240.1 | 32.3 |
| | Diesel | 2,277.4 | 2,445.7 | 3,086.8 | 3,252.9 | 42.8 |
| | Kerosene | 2,285.1 | 2,445.8 | 3,144.6 | 3,614.4 | 58.2 |
| Southern Highlands | Petrol | 2,543.4 | 2,635.5 | 3,145.3 | 3,291.4 | 29.4 |
| | Diesel | 2,369.4 | 2,480.5 | 3,131.4 | 3,293.1 | 39.0 |
| | Kerosene | 2,331.5 | 2,396.8 | 2,977.7 | 3,368.6 | 44.5 |
| Average | Petrol | 2,512.9 | 2,601.8 | 3,096.2 | 3,274.0 | 30.3 |
| | Diesel | 2,338.5 | 2,460.7 | 3,129.9 | 3,271.1 | 39.9 |
| | Kerosene | 2,322.8 | 2,424.4 | 3,096.9 | 3,511.0 | 51.2 |

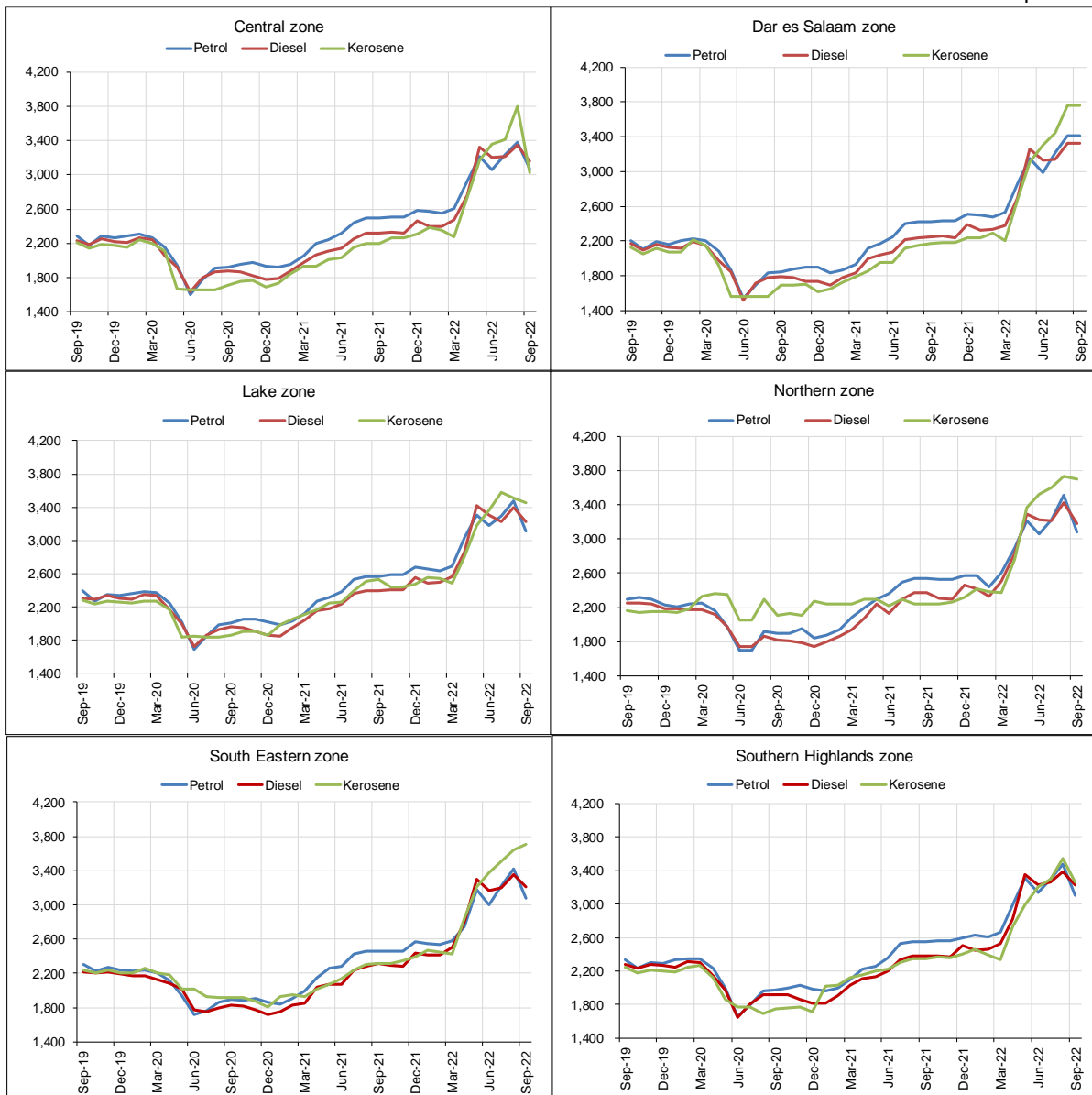
Source: National Bureau of Statistics



Consolidated Zonal Economic Performance Report

Chart 1.2: Monthly Average Fuel Pump Price Movements by Zone

TZS per litre



Source: National Bureau of Statistics and Bank of Tanzania computations



2.0 FOOD SUPPLY SITUATION

Food supply across zones was satisfactory despite few reported incidences of food shortages in some districts in Lake, South Eastern, Central and Northern zones. The shortages were offset by the National Food Reserve Agency (NFRA) release of food stocks and supplies from regions with surplus.

2.1 Food Stock

The stock of food held by the NFRA was 147,895.8 tonnes at the end of September 2022 compared with 150,056.9 tonnes in the corresponding period in 2021 (Table 2.1).² During the quarter under review, the Agency purchased 12,126.8 tonnes of maize and 936.2 tonnes of sorghum from farmers and released 5,141.4 tonnes to councils, and grain traders and millers. Further, the stock of food held by Cereals and other Produce Board (CPB) for commercial purposes was 28,064.9 tonnes, with maize accounting for 80.4 percent of the total stock.³

Table 2.1: Stock of Food Held by National Food Reserve Agency

| Period | Zone | Tonnes | | | | |
|--------|--------------------|------------------|--------------------|------------------------------|-------------------|------------------|
| | | Opening balance | Quantity purchased | Quantity transferred in/out* | Quantity released | Closing balance |
| Sep-21 | Central | 4,867.0 | 0.0 | 0.0 | 0.0 | 4,867.0 |
| | Dar es Salaam | 7,644.5 | 0.0 | 0.0 | 0.0 | 7,644.5 |
| | Lake | 6,784.8 | 0.0 | 0.0 | 0.3 | 6,784.5 |
| | Northern | 7,582.7 | 0.0 | 0.0 | 0.0 | 7,582.7 |
| | South Eastern | 21,063.9 | 9,053.0 | 0.0 | 0.0 | 30,116.9 |
| | Southern Highlands | 59,441.2 | 33,620.1 | 0.0 | 0.0 | 93,061.3 |
| | Total | 107,384.1 | 42,673.1 | 0.0 | 0.3 | 150,056.9 |
| Jun-22 | Central | 4,867.0 | 2,058.7 | 9,987.4 | 10,664.3 | 6,248.8 |
| | Dar es Salaam | 7,644.5 | 0.0 | 29,701.7 | 15,290.0 | 22,056.2 |
| | Lake | 6,784.8 | 295.6 | 0.0 | 6,989.3 | 91.1 |
| | Northern | 7,582.7 | 0.0 | 0.0 | 7,170.9 | 411.8 |
| | South Eastern | 21,063.9 | 40,249.8 | -19,918.9 | 81.2 | 41,313.6 |
| | Southern Highlands | 59,414.5 | 68,167.9 | -19,743.5 | 36,384.5 | 71,454.4 |
| | Total | 107,357.4 | 110,772.0 | 26.7 | 76,580.1 | 141,575.9 |
| Sep-22 | Central | 6,248.8 | 936.2 | 0.0 | 0.0 | 7,185.1 |
| | Dar es Salaam | 22,056.2 | 0.0 | -453.1 | 0.0 | 21,603.1 |
| | Lake | 91.1 | 52.4 | 1,996.9 | 200.0 | 1,940.4 |
| | Northern | 411.8 | 819.9 | 3,904.9 | 515.5 | 4,621.1 |
| | South Eastern | 41,313.6 | 4,568.4 | 0.0 | 1,423.6 | 44,458.4 |
| | Southern Highlands | 71,454.4 | 6,686.0 | -7,050.5 | 3,002.3 | 68,087.6 |
| | Total | 141,575.9 | 13,063.0 | -1,601.8 | 5,141.4 | 147,895.8 |

Source: National Food Reserve Agency

Note: The NFRA stock does not include the amount on transit; *, positive number means net transfer in, and negative number means net transfer out

² Comprised of maize, sorghum and rice.

³ The stock of food held by CPB includes maize, beans, paddy, cashew nuts, rice and sunflower oil.



3.0 SECTORAL PERFORMANCE

3.1 Agriculture

3.1.1 Cash Crops Procurement

The volume of major cash crops procured during the quarter was higher than in the corresponding quarter in 2021, except for tobacco and tea (Table 3.1). Volume of procured seed cotton increased by 25.6 percent to 147,887.4 tonnes, following good harvests attributable to favourable weather conditions for the crops and timely supply of agricultural inputs. Likewise, the increase in the volume of procured coffee was associated with favourable weather conditions, while for sisal it was due to a rising domestic and global demand. On the other hand, volume of tea procured decreased by 7 percent to 3,285.5 tonnes, mainly associated with prolonged drought in tea producing areas.

Table 3.1: Cash Crops Procurement

| | | | | | | | Tonnes |
|---------------------|-------------|------------|-----------|------------|---------------|--------------------|-----------|
| Quarter ending | Crop | Central | Lake | Northern | South Eastern | Southern Highlands | Total |
| Sep-21 | Coffee | N/A | 9,210.2 | 1,246.8 | 3,608.5 | 2,819.5 | 16,885.0 |
| | Seed cotton | 14,958.2 | 102,238.9 | 468.6 | N/A | 118.3 | 117,784.1 |
| | Cashew nut | off-season | N/A | off-season | off-season | off-season | |
| | Sisal | 963.7 | 1,798.3 | 7,393.0 | 342.6 | N/A | 10,497.6 |
| | Tea | N/A | n.a | 655.9 | N/A | 2,876.1 | 3,532.0 |
| | Tobacco | 7,164.3 | 4,678.1 | N/A | 943.2 | 11,376.1 | 24,161.7 |
| Jun-22 | Coffee | n.a | 1,597.7 | 196.8 | 53.0 | 38.6 | 1,886.1 |
| | Seed cotton | 722.6 | 9,809.0 | 46.5 | N/A | 310.7 | 10,888.8 |
| | Cashew nut | off-season | N/A | off-season | 8,902.8 | N/A | 8,902.8 |
| | Sisal | 2,056.1 | 2,555.6 | 7,799.9 | 109.4 | N/A | 12,521.0 |
| | Tea | N/A | 48.8 | 1,160.2 | N/A | 6,124.7 | 7,333.7 |
| | Tobacco | 21,066.3 | 11,144.3 | N/A | off-season | 7,154.8 | 39,365.5 |
| Sep-22 ^p | Coffee | N/A | 17,653.1 | 625.8 | 632.9 | 1,944.3 | 20,856.1 |
| | Seed cotton | 13,722.4 | 134,005.5 | 31.3 | N/A | 128.2 | 147,887.4 |
| | Cashew nut | off-season | N/A | off-season | off-season | off-season | |
| | Sisal | 950.3 | 2,144.4 | 9,122.9 | 231.6 | N/A | 12,449.0 |
| | Tea | N/A | n.a | 613.7 | N/A | 2,671.8 | 3,285.5 |
| | Tobacco | 9,215.9 | 3,344 | N/A | 550.8 | 8,398.2 | 21,509.4 |

Source: Respective Crop Boards

Note: N/A denotes not applicable; n.a not available; and p, provisional data



Consolidated Zonal Economic Performance Report

3.1.2 Livestock Trade

The value of livestock traded in registered markets remained broadly the same at TZS 634.5 billion, relative to the corresponding quarter in 2021 (Table 3.2). Except for the Lake zone, all zones recorded improved performance, mainly associated with increased demand from domestic and neighbouring countries. Notable decrease in the Lake zone was attributable to poor quality of cattle due to limited availability of pastures owing to drought. In terms of share, Central, Lake and Northern zones accounted for the largest shares of the total value of sales.

Table 3.2: Livestock Sold in Registered Markets

| Quarter ending | Livestock | Unit of measure | Central | Dar es Salaam | Lake | Northern | South Eastern | Southern Highlands | Total | |
|---------------------|-----------------|----------------------------------|------------------|-----------------|------------------|------------------|-----------------|--------------------|------------------|-----------|
| Sep-21 ^r | Cattle | Head | 176,143 | 94,341 | 244,432 | 151,932 | 41,280 | 71,341 | 779,469 | |
| | | Millions of TZS | 119,776.9 | 77,674.1 | 212,068.9 | 99,124.5 | 22,789.9 | 46,717.6 | 578,151.9 | |
| | Goats | Head | 99,134 | 26,832 | 105,812 | 151,715 | 14,444 | 21,675 | 419,612 | |
| | | Millions of TZS | 8,208.1 | 3,241.7 | 8,296.4 | 20,467.4 | 966.3 | 840.3 | 42,020.2 | |
| | Sheep | Head | 47,281 | 12,593 | 51,564 | 69,730 | 1,540 | 3,941 | 186,649 | |
| | | Millions of TZS | 3,245.2 | 1,166.0 | 2,887.4 | 7,553.0 | 127.5 | 247.3 | 15,226.4 | |
| | Total | Millions of TZS | 131,230.1 | 82,081.8 | 223,252.8 | 127,144.9 | 23,883.7 | 47,805.2 | 635,398.5 | |
| | Jun-22 | Cattle | Head | 210,011 | 65,206 | 252,868 | 102,166 | 43,986 | 82,253 | 756,490 |
| | | | Millions of TZS | 139,106.0 | 79,679.4 | 134,241.9 | 52,873.5 | 32,323.7 | 42,016.1 | 480,240.7 |
| | | Goats | Head | 142,318 | 37,491 | 137,144 | 148,409 | 22,208 | 21,378 | 508,948 |
| Millions of TZS | | | 11,798.1 | 4,533.9 | 10,083.7 | 12,974.9 | 1,680.1 | 1,129.5 | 42,200.3 | |
| Sheep | | Head | 44,000 | 7,294 | 58,760 | 108,262 | 2,162 | 4,066 | 224,544 | |
| | | Millions of TZS | 2,891.7 | 679.7 | 3,074.7 | 6,645.0 | 191.3 | 285.7 | 13,768.1 | |
| Total | | Millions of TZS | 153,795.8 | 84,893.1 | 147,400.4 | 72,493.4 | 34,195.2 | 43,431.2 | 536,209.1 | |
| Sep-22 ^p | | Cattle | Head | 238,232 | 56,325 | 276,963 | 167,799 | 50,290 | 72,651 | 862,261 |
| | | | Millions of TZS | 170,405.1 | 79,793.8 | 137,611.2 | 103,737.8 | 30,509.1 | 46,788.2 | 568,845.2 |
| | | Goats | Head | 129,511 | 45,039 | 149,751 | 156,007 | 23,205 | 21,019 | 524,532 |
| | Millions of TZS | | 9,976.8 | 5,930.1 | 10,481.6 | 20,814.3 | 1,775.8 | 740.4 | 49,719.0 | |
| | Sheep | Head | 34,545 | 9,822 | 66,307 | 109,561 | 3,852 | 5,502 | 229,589 | |
| | | Millions of TZS | 2,130.5 | 933.1 | 3,572.6 | 8,645.8 | 341.8 | 344.2 | 15,967.9 | |
| | Total | Millions of TZS | 182,512.4 | 86,657.0 | 151,665.4 | 133,197.9 | 32,626.6 | 47,872.8 | 634,532.1 | |
| | | Percentage share in total | 28.8 | 13.7 | 23.9 | 21.0 | 5.1 | 7.5 | 100.0 | |

Source: Regional Administrative Secretary Offices, Ministry of Livestock and Fisheries, and Bank of Tanzania computations

Note: p denotes provisional data; and r, revised data

3.1.3 Hides and Skins

Raw hides and skins worth TZS 1,383.8 million were traded in registered markets during the quarter, 8.5 percent higher than in the corresponding quarter in 2021. The increase was on account of higher demand from West Africa particularly Nigeria and Ghana. Dar es Salaam zone accounted for the largest share of the total value at 30.8 percent followed by Lake and Central zones (Table 3.3).



Consolidated Zonal Economic Performance Report

Table 3.3 Hides and Skins

| Quarter ending | Livestock | Unit of measure | Central | Dar es Salaam | Lake | Northern | South Eastern | Total |
|---------------------|-----------|-----------------|---------|---------------|---------|----------|---------------|---------|
| Sep-21 | Cattle | Pieces | 77,983 | 79,572 | 125,228 | 69,995 | 1,830 | 354,608 |
| | | Millions of TZS | 108.8 | 280.8 | 441.9 | 240.4 | 3.2 | 1,075.0 |
| | Goats | Pieces | 34,547 | 22,247 | 40,772 | 38,985 | 5,849 | 142,400 |
| | | Millions of TZS | 15.7 | 22.2 | 40.5 | 46.6 | 5.1 | 130.0 |
| | Sheep | Pieces | 11,590 | 8,369 | 10,999 | 27,993 | 891 | 59,842 |
| | | Millions of TZS | 5.4 | 3.3 | 3.3 | 58.2 | 0.4 | 70.7 |
| | Total | Millions of TZS | 129.9 | 306.4 | 485.7 | 345.1 | 8.7 | 1,275.8 |
| Share | Percent | 10.2 | 24.0 | 38.1 | 27.1 | 0.7 | 99.3 | |
| Jun-22 | Cattle | Pieces | 77,489 | 77,112 | 107,417 | 66,869 | 5,643 | 334,530 |
| | | Millions of TZS | 234.6 | 422.6 | 588.7 | 125.0 | 42.2 | 1,413.1 |
| | Goats | Pieces | 39,554 | 23,187 | 61,970 | 28,313 | 8,848 | 161,872 |
| | | Millions of TZS | 36.7 | 25.5 | 62.5 | 23.0 | 7.5 | 155.2 |
| | Sheep | Pieces | 21,883 | 7,791 | 20,389 | 28,065 | 1,164 | 79,292 |
| | | Millions of TZS | 15.5 | 4.7 | 11.5 | 19.8 | 1.4 | 52.9 |
| | Total | Millions of TZS | 286.8 | 452.8 | 662.7 | 167.7 | 51.2 | 1,621.1 |
| Share | Percent | 17.7 | 27.9 | 40.9 | 10.3 | 3.2 | 96.8 | |
| Sep-22 ^P | Cattle | Pieces | 81,602 | 90,744 | 85,765 | 69,678 | 5,752 | 333,541 |
| | | Millions of TZS | 210.4 | 408.3 | 363.6 | 177.4 | 47.6 | 1,207.4 |
| | Goats | Pieces | 40,038 | 13,017 | 39,644 | 29,763 | 8,258 | 130,720 |
| | | Millions of TZS | 32.9 | 16.9 | 48.6 | 36.9 | 6.7 | 141.9 |
| | Sheep | Pieces | 12,226 | 1,098 | 14,210 | 28,402 | 1,287 | 57,223 |
| | | Millions of TZS | 8.4 | 0.7 | 4 | 20.0 | 1.5 | 34.5 |
| | Total | Millions of TZS | 251.7 | 425.9 | 416.1 | 234.3 | 55.8 | 1,383.8 |
| Share | Percent | 18.2 | 30.8 | 30.1 | 16.9 | 4.0 | 100.0 | |

Source: Regional Administrative Secretary Offices, Ministry of Livestock and Fisheries, and Bank of Tanzania computations

Note: p denotes provisional data

3.1.3 Fish Trade

Value of fish sold in registered markets rose by 8.8 percent to TZS 127.8 billion from the value recorded in the corresponding quarter in 2021 due to volume increase (Table 3.4). The increase in volume of fish sold was attributable to favourable conditions for fishing activities and measures taken by the Government to combat illegal fishing. Lake zone continued to dominate, accounting for 44.6 percent of the total value, followed by South Eastern zone at 23.4 percent.



Consolidated Zonal Economic Performance Report

Table 3.4: Fish Sold in Registered Markets

| Zone | Unit of measure | Quarter ending | | | Percentage change Sep-21 to Sep-22 | Percentage share Sep-22 |
|--------------------|-----------------|---------------------|-----------|---------------------|---------------------------------------|----------------------------|
| | | Sep-21 ^r | Jun-22 | Sep-22 ^p | | |
| Central | Tonnes | 208.1 | 83.2 | 131.6 | -36.8 | 0.6 |
| | Millions of TZS | 1,269.3 | 527.9 | 998.9 | -21.3 | 0.8 |
| Dar es Salaam | Tonnes | 2,880.4 | 3,559.3 | 4,079.1 | 41.6 | 18.0 |
| | Millions of TZS | 10,560.9 | 9,737.0 | 14,582.1 | 38.1 | 11.4 |
| Lake | Tonnes | 5,681.8 | 7,605.5 | 6,851.7 | 20.6 | 30.2 |
| | Millions of TZS | 58,014.3 | 83,405.1 | 57,063.7 | -1.6 | 44.6 |
| Northern | Tonnes | 2,920.7 | 5,794.1 | 1,761.2 | -39.7 | 7.8 |
| | Millions of TZS | 10,288.9 | 10,071.0 | 8,805.7 | -14.4 | 6.9 |
| South Eastern | Tonnes | 4,139.5 | 4,544.3 | 5,455.7 | 31.8 | 24.0 |
| | Millions of TZS | 22,850.1 | 19,644.3 | 29,925.4 | 31.0 | 23.4 |
| Southern Highlands | Tonnes | 4,108.0 | 4,893.7 | 4,426.3 | 7.7 | 19.5 |
| | Millions of TZS | 14,504.4 | 16,225.3 | 16,435.0 | 13.3 | 12.9 |
| Total | Tonnes | 19,938.6 | 26,480.1 | 22,705.6 | 13.9 | 100.0 |
| | Millions of TZS | 117,487.9 | 139,610.6 | 127,810.7 | 8.8 | 100.0 |

Source: Regional Administrative Secretary Offices and Bank of Tanzania computations

Note: p denotes provisional data; and r, revised data

3.1.4 Forest Products Trade

Value of forest products sold increased by 12.1 percent to TZS 263.8 billion from the value registered in the quarter ending September 2021 (Table 3.5). Timber, which accounts for 75.5 percent of the total value of forest products, increased by 66.2 percent to TZS 199.2 billion, owing to increase in construction activities and high demand from domestic processing factories and neighbouring countries. Southern Highlands zone was dominant, accounting for 92.3 percent of the total value of forest products.



Consolidated Zonal Economic Performance Report

Table 3.5: Value of Forest Products

| | | Millions of TZS | | | | | | |
|---------------------------|--------------------|-----------------|---------------|----------------|-----------------|----------------|--------------------|------------------|
| Quarter ending | Product | Central | Dar es Salaam | Lake | Northern | South Eastern | Southern Highlands | Total |
| Sep-21 | Logs | 122.6 | 0.0 | 1.8 | 0.0 | 1,494.0 | 0.0 | 1,618.4 |
| | Timber | 29.3 | 1.1 | 2.6 | 8,320.4 | 40.5 | 111,434.5 | 119,828.5 |
| | Charcoal | 879.3 | 13.3 | 29.8 | 0.0 | 2,139.3 | 0.0 | 3,061.6 |
| | Fire wood | 8.3 | 0.0 | 0.1 | 0.0 | 125.1 | 0.0 | 133.5 |
| | Poles | 14.2 | 0.0 | 0.0 | 6.6 | 45.6 | 84,062.7 | 84,129.1 |
| | Wood for furniture | 89.2 | 0.0 | 0.0 | 0.0 | 188.6 | 0.0 | 277.9 |
| | Honey and wax | 515.3 | 0.0 | 6.1 | 0.0 | 0.0 | 0.0 | 521.5 |
| | Others | 0.0 | 5.0 | 0.0 | 2.3 | 7.0 | 25,672.0 | 25,686.2 |
| | Total | 1,658.2 | 19.4 | 40.5 | 8,329.2 | 4,040.1 | 221,169.2 | 235,256.6 |
| Jun-22 | Logs | 947.5 | 0.0 | 0.0 | 0.0 | 2,251.0 | 0.0 | 3,198.5 |
| | Timber | 312.4 | 98.1 | 98.4 | 21,318.4 | 17.7 | 157,129.4 | 178,974.4 |
| | Charcoal | 838.5 | 16.9 | 1,521.5 | 0.0 | 2,880.4 | 0.0 | 5,257.3 |
| | Fire wood | 70.3 | 0.0 | 8.1 | 0.0 | 150.9 | 0.0 | 229.3 |
| | Poles | 14.2 | 0.0 | 23.0 | 36.5 | 41.3 | 25,906.8 | 26,021.9 |
| | Wood for furniture | 334.8 | 0.0 | 0.0 | 0.0 | 243.8 | 0.0 | 578.7 |
| | Honey and wax | 786.0 | 0.0 | 13.6 | 0.0 | 0.0 | 0.0 | 799.6 |
| | Others | 44.6 | 20.5 | 0.0 | 533.0 | 268.1 | 20,026.9 | 20,893.0 |
| | Total | 3,348.4 | 135.4 | 1,664.6 | 21,887.9 | 5,853.2 | 203,063.0 | 235,952.6 |
| Sep-22 ^P | Logs | 942.6 | 0.0 | 0.0 | 0.0 | 1,023.1 | 0.0 | 1,965.7 |
| | Timber | 120.6 | 25.7 | 13.7 | 14,319.4 | 25.3 | 184,646.8 | 199,151.5 |
| | Charcoal | 588.9 | 0.6 | 164.7 | 0.0 | 1,945.4 | 0.0 | 2,699.6 |
| | Fire wood | 15.9 | 0.0 | 17.8 | 0.0 | 108.7 | 0.0 | 142.4 |
| | Poles | 2.1 | 0.0 | 0.0 | 59.1 | 26.3 | 30,096.1 | 30,183.6 |
| | Wood for furniture | 84.9 | 0.0 | 0.0 | 0.0 | 93.5 | 0.0 | 178.4 |
| | Honey and wax | 12.0 | 0.0 | 5.2 | 0.0 | 0.0 | 0.0 | 17.2 |
| | Others | 7.1 | 0.2 | 0.0 | 591.6 | 20.0 | 28,832.0 | 29,450.9 |
| | Total | 1,774.1 | 26.5 | 201.3 | 14,970.2 | 3,242.3 | 243,574.9 | 263,789.3 |
| Percentage share in total | | 0.7 | 0.0 | 0.1 | 5.7 | 1.2 | 92.3 | 100.0 |

Source: Tanzania Forest Service Agency

Note: p denotes provisional data; and others include plywood, fibres, baskets and mats

3.2 Manufacturing

Manufacturing activities recorded improvement during the review quarter across all zones, except Northern zone, supported by higher demand from domestic and external markets, particularly regional markets. The improved industrial production was also reinforced by continued increase in capacity utilization and introduction of new lines of production in some manufacturing firms. Goods worth TZS 3,553.3 billion were manufactured in the quarter, higher than in the similar quarter in 2021 by 18.1 percent largely driven by beverages and rolled steel, which altogether accounted for 32.4 percent of the total value (Table 3.6a, Table 3.6b and Chart 3.1).



Consolidated Zonal Economic Performance Report

Table 3.6a: Value of Selected Manufactured Commodities by Zone

| Zone | Quarter ending | | | Percentage change, Sep-21 to Sep-22 | Percentage share, Sep-22 |
|--------------------|---------------------|----------------|---------------------|-------------------------------------|--------------------------|
| | Sep-21 ^r | Jun-22 | Sep-22 ^p | | |
| | Central | 223.7 | 202.8 | | |
| Dar es Salaam | 1,508.8 | 1,591.1 | 1,850.1 | 22.6 | 52.1 |
| Lake | 161.2 | 222.4 | 236.7 | 46.8 | 6.7 |
| Northern | 371.3 | 360.5 | 349.6 | -5.9 | 9.8 |
| South Eastern | 467.7 | 544.1 | 566.6 | 21.1 | 15.9 |
| Southern Highlands | 275.9 | 246.7 | 292.1 | 5.9 | 8.2 |
| Total | 3,008.7 | 3,167.7 | 3,553.5 | 18.1 | 100.0 |

Source: National Bureau of Statistics, respective industries and Bank of Tanzania computations
 Note: r denotes revised data; and p, provisional data

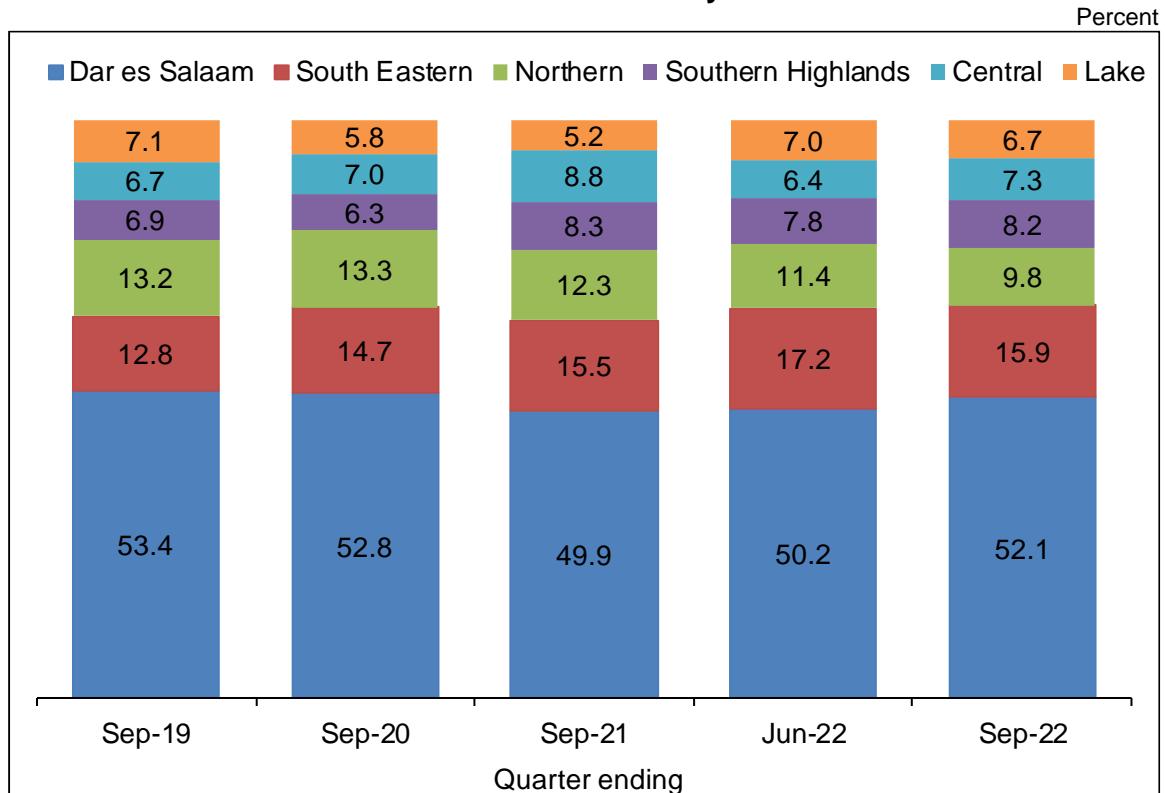
Table 3.6b: Value of Selected Manufactured Commodities by Type

| Commodity | Quarter ending | | | Percentage change, Sep-21 to Sep-22 | Contribution to growth, Sep-22 |
|----------------------------|---------------------|---------|---------------------|-------------------------------------|--------------------------------|
| | Sep-21 ^r | Jun-22 | Sep-22 ^p | | |
| | Total value | 3,008.7 | 3,167.7 | | |
| o/w: Beverages | 657.7 | 738.7 | 805.0 | 22.4 | 27.0 |
| Cement | 362.5 | 302.7 | 384.2 | 6.0 | 4.0 |
| Rolled steel | 236.6 | 295.0 | 345.0 | 45.8 | 19.9 |
| Sugar | 210.2 | 133.2 | 234.6 | 11.6 | 4.5 |
| Soap and toilet detergents | 104.2 | 72.3 | 121.4 | 16.5 | 3.2 |
| Vegetable oils and fats | 96.7 | 139.5 | 119.0 | 23.0 | 4.1 |
| Mattresses | 71.9 | 74.6 | 91.8 | 27.7 | 3.7 |
| Ceramics | 86.7 | 93.8 | 89.0 | 2.7 | 0.4 |
| Textiles | 97.3 | 52.8 | 62.0 | -36.3 | -6.5 |
| Plastic articles | 51.6 | 53.4 | 61.0 | 18.1 | 1.7 |

Source: National Bureau of Statistics and respective industries
 Note: o/w denotes of which; r, revised data; and p, provisional data



Charts 3.1: Share of Manufactured Commodities by Zone



Source: National Bureau of Statistics and manufacturing firms

3.3 Mining

Mining activities improved in all zones with the value of mineral recovery growing by 29.1 percent to USD 838.8 million from the value recorded in the similar quarter of 2021 (Table 3.7a). The improvement was mainly driven by coal, gold and diamond. The value of coal increased significantly owing to high demand from regional and global markets, while for diamond it was due to resumption of production at Williamson mines. As for gold, which accounted for the largest share in total value, the outturn was mainly due to an increase in volume following application of improved mining technology and commencement of operations in new pits within the existing mining sites including Geita and North Mara gold mines. In terms of the mineral recovery by zones, Lake zone accounted for the largest share in total value, followed by South Eastern zone (Table 3.7b).



Consolidated Zonal Economic Performance Report

Table 3.7a: Value of Selected Mineral Recovery

| Type | Quarter ending | | | Millions of USD | |
|---------------------|----------------|--------------|---------------------|-------------------------------------|--------------------------|
| | Sep-21 | Jun-22 | Sep-22 ^p | Percentage change, Sep-21 to Sep-22 | Percentage share, Sep-22 |
| | Gold | 560.2 | 564.0 | 613.1 | 9.4 |
| Coal | 32.7 | 98.9 | 139.5 | --- | 16.6 |
| Building materials | 24.2 | 21.7 | 23.1 | -4.5 | 2.8 |
| Diamond | 0.0 | 17.4 | 21.1 | N/A | 2.5 |
| Gemstones | 8.9 | 6.9 | 17.1 | 93.1 | 2.0 |
| Industrial minerals | 7.4 | 6.9 | 7.2 | -1.5 | 0.9 |
| Limestone | 4.4 | 4.2 | 5.3 | 21.3 | 0.6 |
| Gypsum | 4.0 | 7.5 | 4.3 | 7.8 | 0.5 |
| Salt | 1.6 | 1.4 | 2.6 | 58.7 | 0.3 |
| Tanzanite | 3.8 | 2.1 | 1.6 | -58.7 | 0.2 |
| Others | 2.8 | 2.9 | 3.9 | 36.5 | 0.5 |
| Total | 650.0 | 733.9 | 838.8 | 29.1 | 100.0 |

Source: Mining Commission, Regional Resident Mines Offices, Mining Companies and Bank of Tanzania computations

Note: p denotes provisional data; and “---”, change that exceeds 100 percent

Table 3.7b: Value of Mineral Recovery by Zone

| Zone | Quarter ending | | | Millions of USD | |
|--------------------|----------------|--------------|---------------------|-------------------------------------|--------------------------|
| | Sep-21 | Jun-22 | Sep-22 ^p | Percentage change, Sep-21 to Sep-22 | Percentage share, Sep-22 |
| | Central | 30.0 | 29.3 | 31.5 | 5.1 |
| Lake | 448.8 | 461.9 | 500.6 | 11.5 | 59.7 |
| Northern | 20.6 | 20.9 | 24.5 | 18.7 | 2.9 |
| South Eastern | 49.4 | 108.2 | 152.2 | --- | 18.1 |
| Southern Highlands | 101.2 | 113.5 | 130.1 | 28.6 | 15.5 |
| Total | 650.0 | 733.9 | 838.8 | 29.1 | 100.0 |

Source: Mining Commission, Regional Resident Mines Offices, Mining Companies and Bank of Tanzania computations

Note: p denotes provisional data; and “---”, change that exceeds 100 percent

Trading activities at mineral market centres also improved, with the value of traded minerals recording an annual growth of 5.2 percent to TZS 590.6 billion in the quarter ending September 2022 (Table 3.8). The increase was recorded in Lake, Central and Dar es Salaam zones. Gold accounted for 96.2 percent of total value of minerals traded at the market centres.



Consolidated Zonal Economic Performance Report

Table 3.8: Value of Minerals Sold at Market Centres

Millions of TZS

| Quarter ending | Type of mineral | Central | Dar es Salaam | Lake | Northern | South Eastern | Southern Highlands | Total |
|---------------------|-----------------|-----------------|----------------|------------------|-----------------|----------------|--------------------|------------------|
| Sep-21 | Gold | 37,426.3 | 406.5 | 321,718.7 | 3,328.3 | 7,198.5 | 174,173.8 | 544,252.0 |
| | Tanzanite | 0.0 | 628.1 | 0.0 | 8,825.0 | 0.0 | 0.0 | 9,453.1 |
| | Diamond | 0.0 | 0.0 | 1,486.8 | 0.0 | 0.0 | 0.0 | 1,486.8 |
| | Tin | 0.0 | 0.0 | 1,416.3 | 0.0 | 0.0 | 0.0 | 1,416.3 |
| | Gemstone | 1,235.4 | 6.6 | 0.0 | 3,011.4 | 495.9 | 0.0 | 4,749.2 |
| | Total | 38,661.6 | 1,041.1 | 324,621.8 | 15,164.7 | 7,694.4 | 174,173.8 | 561,357.5 |
| Jun-22 | Gold | 39,535.0 | 887.0 | 353,853.1 | 4,653.0 | 7,051.6 | 151,288.5 | 557,268.2 |
| | Tanzanite | 0.0 | 642.9 | 0.0 | 4,879.8 | 0.0 | 0.0 | 5,522.6 |
| | Diamond | 0.0 | 0.0 | 2,649.8 | 0.0 | 0.0 | 0.0 | 2,649.8 |
| | Tin | 0.0 | 0.0 | 7,691.9 | 0.0 | 0.0 | 0.0 | 7,691.9 |
| | Gemstone | 1,698.0 | 44.8 | 0.0 | 3,103.6 | 1,720.4 | 0.0 | 6,566.9 |
| | Total | 41,233.0 | 1,574.7 | 364,194.7 | 12,636.4 | 8,772.0 | 151,288.5 | 579,699.4 |
| Sep-22 ^P | Gold | 36,896.8 | 601.1 | 371,759.2 | 4,094.9 | 5,923.6 | 148,863.6 | 568,139.3 |
| | Tanzanite | 0.0 | 2,552.3 | 0.0 | 6,007.5 | 0.0 | 0.0 | 8,559.9 |
| | Diamond | 0.0 | 0.0 | 1,530.6 | 0.0 | 0.0 | 0.0 | 1,530.6 |
| | Tin | 0.0 | 0.0 | 3,127.1 | 0.0 | 0.0 | 0.0 | 3,127.1 |
| | Gemstone | 4,030.9 | 139.7 | 0.0 | 3,437.4 | 1,637.9 | 0.0 | 9,245.9 |
| | Total | 40,927.7 | 3,293.1 | 376,416.9 | 13,539.9 | 7,561.5 | 148,863.6 | 590,602.7 |
| Percentage share | | 6.9 | 0.6 | 63.7 | 2.3 | 1.3 | 25.2 | 100.0 |

Source: Mining Commission

Note: p denotes, provisional data

3.4 Tourism

Tourism activities progressed significantly, reflecting continued Government and private sector efforts to promote the industry. The number of visitors to national parks more than doubled to 879,945 from the number registered in the corresponding period in 2021. Earnings comprising entry fees, concessions, camping and other fees, also more than doubled to TZS 159.5 billion (Table 3.9). Northern zone accounted for the largest share in the number of visitors and earnings at 68.1 percent and 48.7 percent, respectively.



Consolidated Zonal Economic Performance Report

Table 3.9: Earnings and Number of Visitors to National Parks

| Zone | Unit of measure | Quarter ending | | | Percentage change, Sep-21 to Sep-22 | Percentage share, Sep-22 |
|--------------------|----------------------------|----------------|----------|---------------------|-------------------------------------|--------------------------|
| | | Sep-21 | Jun-22 | Sep-22 ^p | | |
| Central | Number of visitors | 20,451 | 16,093 | 37,957 | 85.6 | 4.3 |
| | Earnings (Millions of TZS) | 748.0 | 608.3 | 1,512.7 | --- | 0.9 |
| Lake | Number of visitors | 106,249 | 99,929 | 201,097 | 89.3 | 22.9 |
| | Earnings (Millions of TZS) | 28,348.4 | 22,099.0 | 73,007.5 | --- | 45.8 |
| Northern | Number of visitors | 177,567 | 213,219 | 599,613 | --- | 68.1 |
| | Earnings (Millions of TZS) | 29,568.0 | 38,220.9 | 77,661.6 | --- | 48.7 |
| South Eastern | Number of visitors | 14,747 | 9,900 | 30,192 | --- | 3.4 |
| | Earnings (Millions of TZS) | 1,606.8 | 1,232.7 | 4,680.9 | --- | 2.9 |
| Southern Highlands | Number of visitors | 6,953 | 5,065 | 11,086 | 59.4 | 1.3 |
| | Earnings (Millions of TZS) | 1,195.1 | 58.3 | 2,683.9 | --- | 1.7 |
| Total | Number of visitors | 325,967 | 344,206 | 879,945 | --- | 100.0 |
| | Earnings (Millions of TZS) | 61,466.2 | 62,219.2 | 159,546.6 | --- | 100.0 |

Source: Tanzania National Park Authority, Ngorongoro Conservation Area Authority and Bank of Tanzania computations

Note: p denotes provisional data; and “---”, change that exceeds 100 percent

Museums across all zones also recorded growth in the number of visitors and earnings. Number of visitors increased by 81 percent to 23,135, while earnings increased by more than two-fold to TZS 254.5 million, from the levels recorded in the corresponding quarter in 2021 (Table 3.10). Dar es Salaam zone continued to account for the largest share of both number of visitors and earnings at 62.9 percent and 80.5 percent, respectively.

Table 3.10: Earnings and Number of Visitors to Museums

| Zone | Unit of measure | Quarter ending | | | Percentage change, Sep-21 to Sep-22 | Percentage share, Sep-22 |
|---------------|----------------------------|----------------|--------|---------------------|-------------------------------------|--------------------------|
| | | Sep-21 | Jun-22 | Sep-22 ^p | | |
| Dar es Salaam | Number of visitors | 8,513 | 17,816 | 14,548 | 70.9 | 62.9 |
| | Earnings (Millions of TZS) | 83.0 | 112.4 | 204.9 | --- | 80.5 |
| Lake | Number of visitors | 1,760 | 1,143 | 2,328 | 32.3 | 10.1 |
| | Earnings (Millions of TZS) | 4.2 | 22.6 | 26.1 | --- | 10.3 |
| Northern | Number of visitors | 1,636 | 3,442 | 4,377 | --- | 18.9 |
| | Earnings (Millions of TZS) | 10.9 | 12.9 | 19.5 | 78.3 | 7.6 |
| South Eastern | Number of visitors | 875 | 1,195 | 1,882 | --- | 8.1 |
| | Earnings (Millions of TZS) | 28.5 | 2.9 | 4.0 | -85.9 | 1.6 |
| Total | Number of visitors | 12,784 | 23,596 | 23,135 | 81.0 | 100.0 |
| | Earnings (Millions of TZS) | 127 | 151 | 255 | --- | 100.0 |

Source: National Museum of Tanzania and Bank of Tanzania computations

Note: p denotes provisional data; and “---”, change that exceeds 100 percent



Consolidated Zonal Economic Performance Report

3.5 Energy

Electricity generation increased by 10.5 percent to 2,313.4 Gigawatt hours (GWh) from the volume generated in the corresponding quarter in 2021, attributed to increased capacity utilization of gas and diesel power plants (Table 3.11 and Table 3.12). The increase was largely observed in thermal power plants—Ubungo I, Ubungo II, Ubungo III, Kinyerezi I and Kinyerezi II power plants in Dar es Salaam zone; Nyakato, Kigoma, Kibondo and Kasulu in Lake zone and Mtwara, Somanga and Mafia plants in South Eastern zone. Similarly, electricity imported from Uganda and Zambia increased by 43.2 percent to 42.2 GWh.

Table 3.11: Electricity Generation

| Zone | Quarter ending | | | Percentage change Sep-21 to Sep-22 | Percentage share Sep-22 |
|--------------------|----------------|-------------|---------------------|---------------------------------------|----------------------------|
| | Sep-21 | Jun-22 | Sep-22 ^p | | |
| Electricity (MWh): | | | | | |
| Central | 498,563.9 | 482,744.9 | 403,563.5 | -19.1 | 17.1 |
| Dar es Salaam | 1,271,759.6 | 1,611,702.2 | 1,649,615.5 | 29.7 | 70.0 |
| Lake | 33,110.6 | 17,366.0 | 49,479.2 | 49.4 | 2.1 |
| o/w: Imported | 18,932.0 | 136.0 | 29,251.8 | 54.5 | |
| Northern | 108,111.9 | 50,933.0 | 37,015.7 | -65.8 | 1.6 |
| South Eastern | 33,880.5 | 39,116.6 | 45,683.8 | 34.8 | 1.9 |
| Southern Highlands | 177,404.0 | 154,292.5 | 170,304.0 | -4.0 | 7.2 |
| o/w: Imported | 10,550.7 | 11,611.1 | 12,979.9 | 23.0 | |
| Total | 2,122,830.5 | 2,356,155.2 | 2,355,661.7 | 11.0 | 100.0 |
| o/w: Imported | 29,482.7 | 11,747.0 | 42,231.7 | 43.2 | 1.8 |
| Domestic generated | 2,093,347.7 | 2,344,408.2 | 2,313,430.0 | 10.5 | 98.2 |

Source: Tanzania Electric Supply Company and Bank of Tanzania computations

Note: MWh denotes Megawatts hour; and p, provisional data



Consolidated Zonal Economic Performance Report

Table 3.12: Electricity Generation by Source

| Quarter ending | Source | | | | | | | MWh |
|---------------------|-----------------------------|------------------|--------------------|-----------------|------------------|-----------------|--------------------|--------------------|
| | | Central | Dar es Salaam | Lake | Northern | South Eastern | Southern Highlands | Total |
| Sep-21 | Generated by Tanesco plants | 496,795.0 | 912,397.8 | 14,178.6 | 102,197.7 | 27,793.4 | 160,128.1 | 1,713,490.7 |
| | Hydro | 496,733.2 | N/A | N/A | 101,709.8 | N/A | 153,994.8 | 752,437.8 |
| | Thermal | 61.8 | 912,397.8 | 14,178.6 | 487.9 | 27,793.4 | 6,133.3 | 961,052.8 |
| | Generated by private plants | 1,768.9 | 359,361.8 | 0.0 | 5,914.2 | 6,087.1 | 6,725.1 | 379,857.1 |
| | Hydro | 1,768.9 | N/A | N/A | 1,088.3 | 6,087.1 | 5,881.0 | 14,825.4 |
| | Thermal | N/A | 359,361.8 | N/A | 4,825.9 | N/A | 844.1 | 365,031.7 |
| | Imported | N/A | N/A | 18,932.0 | 0.0 | 0.0 | 10,550.7 | 29,482.7 |
| | Total | 498,563.9 | 1,271,759.6 | 33,110.6 | 108,111.9 | 33,880.5 | 177,404.0 | 2,122,830.5 |
| Jun-22 | Generated by Tanesco plants | 481,488.1 | 1,228,453.5 | 17,230.0 | 49,225.8 | 30,985.3 | 136,284.0 | 1,943,666.9 |
| | Hydro | 481,384.5 | N/A | N/A | 48,328.3 | N/A | 130,090.3 | 659,803.1 |
| | Thermal | 103.6 | 1,228,453.5 | 17,230.0 | 897.5 | 30,985.3 | 6,193.8 | 1,283,863.8 |
| | Generated by private plants | 1,256.8 | 383,248.7 | 0.0 | 1,707.1 | 8,131.3 | 6,397.4 | 400,741.3 |
| | Hydro | 1,256.8 | N/A | N/A | 531.7 | 8,131.3 | 4,392.9 | 14,312.6 |
| | Thermal | N/A | 383,248.7 | N/A | 1,175.5 | N/A | 2,004.5 | 386,428.6 |
| | Imported | N/A | N/A | 136.0 | 0.0 | 0.0 | 11,611.1 | 11,747.0 |
| | Total | 482,744.9 | 1,611,702.2 | 17,366.0 | 50,933.0 | 39,116.6 | 154,292.5 | 2,356,155.2 |
| Sep-22 ^p | Generated by Tanesco plants | 401,901.9 | 1,315,959.5 | 20,227.3 | 31,650.0 | 37,448.4 | 153,721.4 | 1,960,908.5 |
| | Hydro | 401,307.5 | N/A | N/A | 29,858.4 | N/A | 153,036.5 | 584,202.4 |
| | Thermal | 594.4 | 1,315,959.5 | 20,227.3 | 1,791.6 | 37,448.4 | 684.9 | 1,376,706.1 |
| | Generated by private plants | 1,661.7 | 333,656.0 | 0.0 | 5,365.7 | 8,235.4 | 3,602.7 | 352,521.5 |
| | Hydro | 1,661.7 | N/A | N/A | 435.3 | 8,235.4 | 1,741.5 | 12,073.9 |
| | Thermal | N/A | 333,656.0 | N/A | 4,930.4 | N/A | 1,861.2 | 340,447.6 |
| | Imported | N/A | N/A | 29,251.8 | 0.0 | 0.0 | 12,979.9 | 42,231.7 |
| | Total | 403,563.5 | 1,649,615.5 | 49,479.2 | 37,015.7 | 45,683.8 | 170,304.0 | 2,355,661.7 |

Source: Tanzania Electric Supply Company and Bank of Tanzania Computations

Note: p denotes provisional data, N/A, denotes not applicable

Production of natural gas at Songo Songo and Mnazi Bay fields increased by 23.8 percent to 19,868.5 Million Standard Cubic Feet (MMSCF) from the volume registered in the corresponding quarter in 2021. Gas produced at Songo Songo field accounted for 60.1 percent of the total gas production during the quarter (Table 3.13 and Chart 3.2). The increase in production was driven by higher demand largely by Tanzania Electric Supply Company Limited (TANESCO). During the quarter under review, natural gas consumption increased by 21.2 percent to 19,184.1 MMSCF, with power generating plants accounting for 84.2 percent of total natural gas consumption in the country.



Consolidated Zonal Economic Performance Report

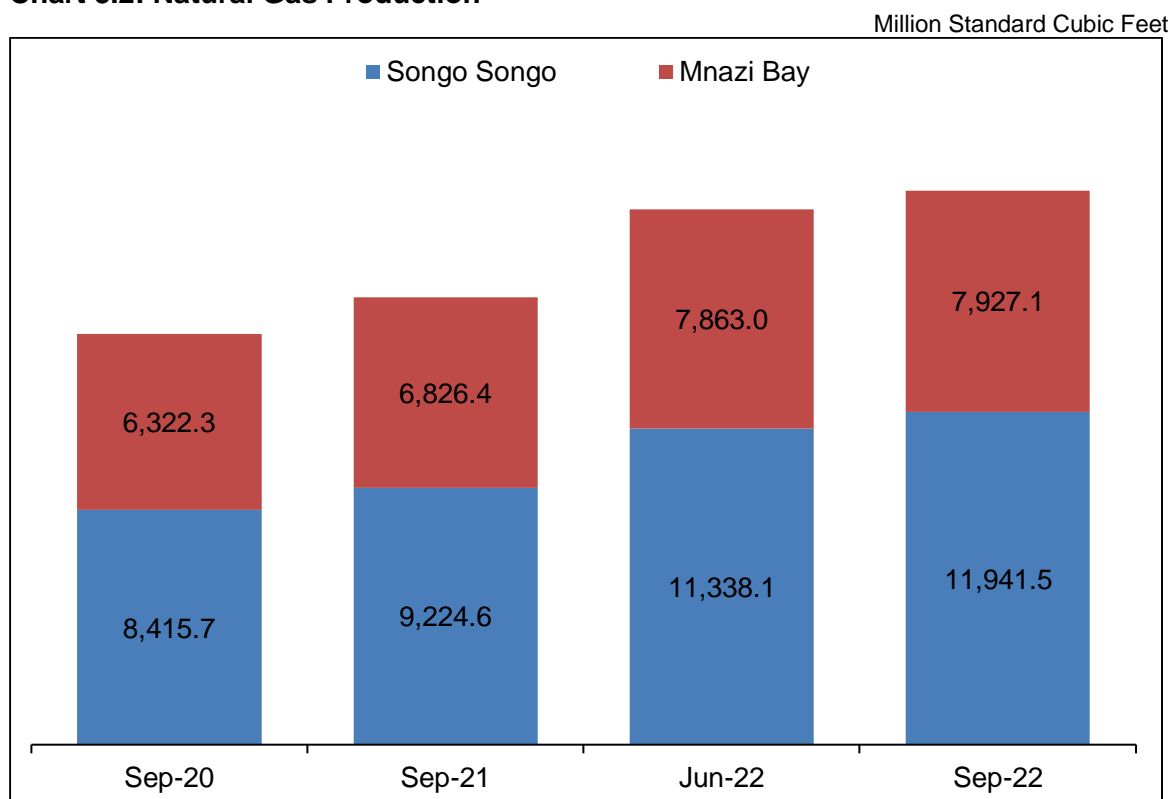
Table 3.13: Natural Gas Production and Consumption

| | Quarter ending | | | Million Standard Cubic Feet | |
|-----------------------------------|----------------------------------|-----------------|-----------------|---------------------------------------|----------------------------|
| | Sep-21 | Jun-22 | Sep-22 | Percentage change Sep-21 to Sep-22 | Percentage share Sep-22 |
| | A: Natural gas production | | | | |
| Songo Songo | 9,224.6 | 11,338.1 | 11,941.5 | 29.5 | 60.1 |
| Mnazi Bay | 6,826.4 | 7,863.0 | 7,927.1 | 16.1 | 39.9 |
| Total production | 16,051.0 | 19,201.1 | 19,868.5 | 23.8 | 100.0 |
| B: Natural gas consumption | | | | | |
| Power generating plants | 12,470.8 | 15,613.9 | 16,150.8 | 29.5 | 84.2 |
| Industries | 3,345.8 | 2,955.5 | 3,011.9 | -10.0 | 15.7 |
| Vehicles | 6.8 | 14.8 | 17.1 | --- | 0.1 |
| Households | 0.5 | 0.9 | 1.2 | --- | 0.0 |
| Others | 2.5 | 3.0 | 3.0 | 22.3 | 0.0 |
| Total consumption | 15,826.4 | 18,588.1 | 19,184.1 | 21.2 | 100.0 |

Source: Tanzania Petroleum Development Corporation

Note: '---' denotes a change that exceeds 100 percent

Chart 3.2: Natural Gas Production



Source: Tanzania Petroleum Development Corporation



4.0 GOVERNMENT REVENUE PERFORMANCE

4.1 Tax Revenue Collections

Tax revenue collections were broadly in line with the target for the quarter ending September 2022. Tax revenue amounted to TZS 5,818.7 billion, equivalent to 99.1 percent of the target (Table 4.1). This performance was partly explained by continuous public awareness campaigns on tax collections, and recovery of economic activities from the effects of COVID-19 pandemic. Dar es Salaam zone remained dominant, accounting for 84.6 percent of tax collections.

Table 4.1: Tax Revenue Performance by Zone

Billions of TZS

| Zone | Quarter ending | | | | Actual to target ratio | Percentage share, Sep-22 |
|--------------------|----------------|----------------|----------------|----------------|------------------------|--------------------------|
| | Sep-21 | Jun-22 | Sep-22 | | | |
| | Actual | | Target | Actual | | |
| Central | 84.8 | 98.3 | 112.5 | 113.4 | 100.8 | 1.9 |
| Dar es Salaam | 4,510.4 | 4,784.5 | 5,099.5 | 4,920.4 | 96.5 | 84.6 |
| Lake | 120.2 | 147.2 | 139.6 | 158.0 | 113.2 | 2.7 |
| Northern | 106.2 | 306.0 | 391.6 | 494.2 | 126.2 | 8.5 |
| Southern Eastern | 33.1 | 54.8 | 45.6 | 45.8 | 100.5 | 0.8 |
| Southern Highlands | 61.0 | 66.4 | 82.4 | 87.0 | 105.6 | 1.5 |
| Total | 4,915.6 | 5,457.2 | 5,871.1 | 5,818.7 | 99.1 | 100.0 |

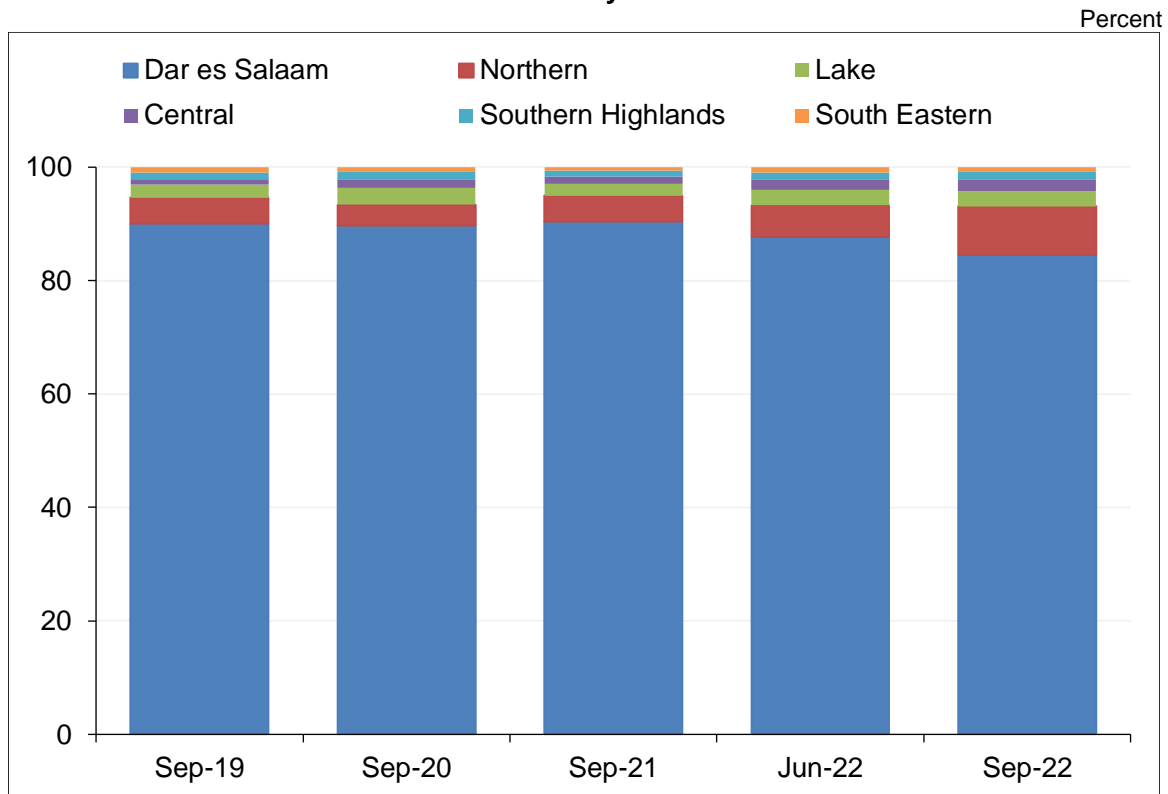
Source: Tanzania Revenue Authority and Bank of Tanzania computations

Note: Tax revenue is on gross basis inclusive of tax refunds



Consolidated Zonal Economic Performance Report

Chart 4.1: Share of Tax Revenue Collection by Zone



Source: Tanzania Revenue Authority

Table 4.2: Tax Revenue Performance by Category

| | | Billions of TZS | | | | | | | |
|----------------|---------------------------------|-----------------|---------------|-------|----------|---------------|--------------------|---------|------------------|
| Quarter ending | Category | Central | Dar es Salaam | Lake | Northern | South Eastern | Southern Highlands | Total | Percentage share |
| Sep-21 | Tax on imports | 0.3 | 1,942.4 | 40.3 | 16.7 | 3.6 | 18.4 | 2,021.6 | 41.1 |
| | Tax on local goods and services | 21.2 | 644.8 | 36.5 | 7.1 | 10.7 | 14.9 | 735.2 | 15.0 |
| | Direct tax | 63.3 | 1,923.2 | 43.4 | 82.4 | 18.7 | 27.7 | 2,158.8 | 43.9 |
| | Total | 84.8 | 4,510.4 | 120.2 | 106.2 | 33.1 | 61.0 | 4,915.6 | 100.0 |
| Jun-22 | Tax on imports | 0.7 | 1,992.3 | 58.1 | 104.3 | 19.3 | 25.5 | 2,200.2 | 40.3 |
| | Tax on local goods and services | 24.0 | 704.4 | 40.1 | 45.9 | 13.0 | 13.5 | 840.8 | 15.4 |
| | Direct tax | 73.6 | 2,087.8 | 49.1 | 155.8 | 22.5 | 27.4 | 2,416.1 | 44.3 |
| | Total | 98.3 | 4,784.5 | 147.2 | 306.0 | 54.8 | 66.4 | 5,457.2 | 100.0 |
| Sep-22 | Tax on imports | 0.7 | 4,251.6 | 65.4 | 125.7 | 9.6 | 38.2 | 4,491.3 | 77.2 |
| | Tax on local goods and services | 35.8 | 269.6 | 37.9 | 78.6 | 13.3 | 17.1 | 452.4 | 7.8 |
| | Direct tax | 76.9 | 399.2 | 54.6 | 289.8 | 22.9 | 31.6 | 875.1 | 15.0 |
| | Total | 113.4 | 4,920.4 | 158.0 | 494.2 | 45.8 | 87.0 | 5,818.7 | 100.0 |

Source: Tanzania Revenue Authority and Bank of Tanzania computations

4.2 Local Government Revenue Collections

Local Government Authorities' revenue collection from own sources amounted to TZS 238.5 billion, equivalent to 90.1 percent of the target (Table 4.3). The performance was partly associated with expansion of economic activities and increased usage of point-of-sale devices. Lake and Dar es Salaam zones accounted for the largest share of the collections at 23.2 percent and 22 percent, respectively.



Consolidated Zonal Economic Performance Report

Table 4.3: Local Government Revenue Performance by Zone

| Zone | Quarter ending | | | | Actual to target ratio | Percentage share, Sep-22 |
|--------------------|----------------|--------------|--------------|--------------|------------------------|--------------------------|
| | Sep-21 | Jun-22 | Sep-22 | | | |
| | Actual | | Target | Actual | | |
| Central | 33.9 | 30.3 | 40.6 | 40.7 | 100.4 | 17.1 |
| Dar es Salaam | 54.2 | 51.3 | 56.8 | 52.5 | 92.5 | 22.0 |
| Lake | 45.3 | 45.5 | 47.7 | 55.3 | 116.1 | 23.2 |
| Northern | 35.4 | 109.3 | 52.8 | 44.4 | 83.9 | 18.6 |
| Sourth Eastern | 23.9 | 26.1 | 32.1 | 26.8 | 83.6 | 11.2 |
| Southern Highlands | 11.7 | 18.3 | 34.9 | 18.8 | 53.9 | 7.9 |
| Total | 204.4 | 280.9 | 264.8 | 238.5 | 90.1 | 100.0 |

Source: Regional Administrative Secretary offices

5.0 TRADE

5.1 Cross Border Trade

Trade with neighbouring countries continued to register surplus, albeit lower than the similar quarter in 2021 (Table 5.1). The trade surplus narrowed by 10.5 percent to TZS 1,728.4 billion, largely emanating from the Northern zone, following decline in exports particularly maize and coal, coupled with increase in imports.

Table 5.1: Cross Border Trade

| Zone | | Quarter ending | | | Percentage change, Sep-21 to Sep-22 | Percentage share, Sep-22 |
|--------------------|---------------|---------------------|---------------------|---------------------|-------------------------------------|--------------------------|
| | | Sep-21 ^r | Jun-22 ^r | Sep-22 ^p | | |
| | | Lake | Exports | 1,492.3 | | |
| | Imports | 156.4 | 237.5 | 218.4 | 39.6 | 35.3 |
| | Trade balance | 1,335.9 | 532.1 | 1,349.1 | 1.0 | 78.1 |
| Northern | Exports | 742.2 | 654.1 | 546.3 | -26.4 | 23.3 |
| | Imports | 169.2 | 252.1 | 227.9 | 34.7 | 36.8 |
| | Trade balance | 573.0 | 402.0 | 318.4 | -44.4 | 18.4 |
| South Eastern | Exports | 2.1 | 53.1 | 4.9 | --- | 0.2 |
| | Imports | 0.3 | 3.8 | 0.5 | 40.8 | 0.1 |
| | Trade balance | 1.8 | 49.3 | 4.4 | --- | 0.3 |
| Southern Highlands | Exports | 189.5 | 237.8 | 229.3 | 21.1 | 9.8 |
| | Imports | 168.5 | 141.4 | 172.8 | 2.6 | 27.9 |
| | Trade balance | 21.0 | 96.5 | 56.5 | --- | 3.3 |
| Total | Exports | 2,426.2 | 1,714.6 | 2,348.0 | -3.2 | 100.0 |
| | Imports | 494.5 | 634.8 | 619.6 | 25.3 | 100.0 |
| | Trade balance | 1,931.7 | 1,079.8 | 1,728.4 | -10.5 | |

Source: Tanzania Revenue Authority

Note: r denotes revised data; p, provisional data, and "---", change that exceeds 100 percent



5.2 Ports Performance

Volume of cargo handled at major sea and lake ports increased by 19 percent to 5.5 million tonnes from the volume handled in the quarter ending September 2021 (Table 5.2). All ports registered increase in volumes except Kigoma and Lindi ports. The increase in volume of cargo handled at Mtwara port was mainly on account of rise in exports of coal and cement, as well as increase in importation of petroleum products. As for Dar es Salaam and Tanga ports the increase in volume of cargo was largely associated with ongoing improvement of ports' infrastructure, while in Mwanza port it was due to opening up of trade activities with neighbouring countries after COVID-19, particularly Uganda.

Table 5.2: Ports Performance

| Zone | Port | Quarter ending | | | Percentage change, Sep-21 to Sep-22 | Percentage share, Sep-22 |
|---------------|---------------|------------------|------------------|------------------|-------------------------------------|--------------------------|
| | | Sep-21 | Jun-22 | Sep-22 | | |
| Dar es Salaam | Dar es Salaam | 4,400,048 | 4,655,717 | 4,836,042 | 9.9 | 87.3 |
| Lake | Kigoma | 49,608 | 47,183 | 45,239 | -8.8 | 0.8 |
| | Mwanza | 15,371 | 39,008 | 27,513 | 79.0 | 0.5 |
| Northern | Tanga | 135,316 | 291,986 | 250,210 | 84.9 | 4.5 |
| South Eastern | Mtwara | 46,711 | 270,943 | 370,224 | --- | 6.7 |
| | Kilwa | 2,188 | 3,100 | 4,509 | --- | 0.1 |
| | Lindi | 3,225 | 1,591 | 1,758 | -45.5 | 0.0 |
| | Mbambabay | 1,143 | 1,336 | 1,223 | 7.0 | 0.0 |
| Total | | 4,653,610 | 5,310,864 | 5,536,718 | 19.0 | 100.0 |

Source: Tanzania Port Authority

Note: "---" denotes change that exceeds 100 percent

5.3 Airports Performance

Airport operations in most of the zones continued to improve mainly due to revamping economic activities and relaxation of travel restrictions. The number of international and domestic flights increased to 8,056 and 33,690 from 5,143 and 23,792, respectively, in the quarter ending September 2021. Likewise, volume of cargo handled increased to 9,270.2 tonnes from 8,162.7 tonnes (Table 5.3).



Consolidated Zonal Economic Performance Report

Table 5.3: Airports Performance

| Quarter ending | Particular | Unit | Central | Dar es Salaam | Lake | South Eastern | Northern | Southern Highlands | Total |
|----------------|--------------------------|--------|---------|---------------|---------|---------------|----------|--------------------|---------|
| Sep-21 | International flights | Number | 25 | 3,064 | 294 | 2 | 1,743 | 15 | 5,143 |
| | International passengers | Number | 68 | 174,478 | 823 | 0 | 56,146 | 3 | 231,518 |
| | Domestic flights | Number | 1,029 | 8,841 | 2,804 | 648 | 9,793 | 677 | 23,792 |
| | Domestic passengers | Number | 28,150 | 239,527 | 90,339 | 6,641 | 107,510 | 21,040 | 493,207 |
| | Volume of cargo | Tonnes | 221.3 | 5,619.4 | 410.6 | 38.1 | 1,687.6 | 185.7 | 8,162.7 |
| Jun-22 | International flights | Number | 54 | 4,372 | 330 | 3 | 1,747 | 27 | 6,533 |
| | International passengers | Number | 79 | 236,372 | 708 | 12 | 54,934 | 0 | 292,105 |
| | Domestic flights | Number | 1,487 | 8,621 | 2,483 | 592 | 6,686 | 570 | 20,439 |
| | Domestic passengers | Number | 47,476 | 275,486 | 92,774 | 8,188 | 87,277.0 | 16,184 | 527,385 |
| | Volume of cargo | Tonnes | 377.2 | 2,930.7 | 387.0 | 73.3 | 832 | 137.5 | 4,737.3 |
| Sep-22 | International flights | Number | 72 | 5,165 | 466 | 3 | 2,310 | 40 | 8,056 |
| | International passengers | Number | 43 | 328,830 | 1,594 | 2 | 140,426 | 76 | 470,971 |
| | Domestic flights | Number | 1,366 | 10,759 | 2,764 | 942 | 16,829.0 | 1,030 | 33,690 |
| | Domestic passengers | Number | 44,995 | 345,717 | 112,966 | 10,864 | 217,708 | 30,813 | 763,063 |
| | Volume of cargo | Tonnes | 0.4 | 6,447.0 | 368.2 | 70.8 | 2,184 | 199.3 | 9,270.2 |

Source: Tanzania Civil Aviation Authority

6.0 FINANCIAL SECTOR DEVELOPMENTS

6.1 Bank Deposits and Loans

Deposits mobilized by banks increased across all zones, attributed to ongoing deposit mobilization measures by banks, enhanced use of agent banking and digital banking platforms. Deposits recorded an annual growth of 13.5 percent to TZS 26,603.6 billion, with Dar es Salaam zone continuing to account for the largest share, at 63 percent (Table 6.1).

Table 6.1: Bank Deposits

| Zone | At the end of | | | Billions of TZS | |
|--------------------|-----------------|-----------------|-----------------|-------------------------------------|--------------------------|
| | Sep-21 | Jun-22 | Sep-22 | Percentage change, Sep-21 to Sep-22 | Percentage share, Sep-22 |
| Central | 1,874.8 | 2,250.3 | 2,356.8 | 25.7 | 8.9 |
| Dar es Salaam | 15,048.2 | 16,257.1 | 16,761.5 | 11.4 | 63.0 |
| South Eastern | 768.7 | 825.6 | 786.1 | 2.3 | 3.0 |
| Lake | 1,871.3 | 2,283.8 | 2,146.0 | 14.7 | 8.1 |
| Northern | 2,564.8 | 3,075.2 | 3,241.9 | 26.4 | 12.2 |
| Southern Highlands | 1,308.1 | 1,318.7 | 1,311.2 | 0.2 | 4.9 |
| Total | 23,436.0 | 26,010.7 | 26,603.6 | 13.5 | 100.0 |

Source: Banks and Bank of Tanzania computations

Note: Data excludes Zanzibar



Consolidated Zonal Economic Performance Report

Bank loans to various economic activities grew by 19.3 percent, year-on-year, to TZS 21,982.8 billion at the end of the review quarter (Table 6.2).⁴ The improved performance was largely attributed to, among others, measures taken to improve liquidity in the banking system, recovery of economic activities after the effects of COVID-19 pandemic as well as improvement in business environment. About 72 percent of bank loans were held by personal, trade, agriculture and manufacturing activities (Table 6.3).

Table 6.2: Bank Loans

| Zone | Stock as at the end of | | | Percentage change, Sep-21 to Sep-22 | Percentage share, Sep-22 |
|--------------------|------------------------|-----------------|-----------------|-------------------------------------|--------------------------|
| | Sep-21 | Jun-22 | Sep-22 | | |
| Central | 1,705.6 | 1,936.5 | 2,120.1 | 24.3 | 9.6 |
| Dar es Salaam | 11,116.5 | 12,253.2 | 12,842.3 | 15.5 | 58.4 |
| South Eastern | 832.6 | 1,014.5 | 1,093.7 | 31.4 | 5.0 |
| Lake | 2,247.4 | 2,728.2 | 2,882.5 | 28.3 | 13.1 |
| Northern | 1,881.9 | 2,212.0 | 2,366.0 | 25.7 | 10.8 |
| Southern Highlands | 642.2 | 668.0 | 678.2 | 5.6 | 3.1 |
| Total | 18,426.2 | 20,812.3 | 21,982.8 | 19.3 | 100.0 |

Source: Banks and Bank of Tanzania computations

Note: excludes data from Zanzibar

Table 6.3: Percentage Share of Banks' Lending by Activity as at 30th September 2022

| Activity | Central | Dar es Salaam | Lake | Northern | South Eastern | Southern Highlands |
|--|---------|---------------|------|----------|---------------|--------------------|
| Agriculture, hunting, forestry and fishing | 9.7 | 3.6 | 13.6 | 7.9 | 9.6 | 23.8 |
| Building and construction | 0.9 | 6.9 | 3.4 | 1.7 | 0.7 | 1.9 |
| Electricity, gas and water | 0.2 | 3.0 | 0.3 | 0.6 | 0.1 | 0.8 |
| Financial intermediation | 0.1 | 3.1 | 0.9 | 0.1 | 0.0 | 1.9 |
| Manufacturing | 2.3 | 14.7 | 7.5 | 9.6 | 1.0 | 2.8 |
| Mining and quarrying | 0.0 | 2.0 | 3.5 | 1.3 | 0.1 | 2.0 |
| Transport, storage and communication | 1.9 | 7.8 | 3.2 | 2.1 | 1.8 | 2.3 |
| Wholesale and retail trade | 7.2 | 21.6 | 14.1 | 15.4 | 7.6 | 7.0 |
| Real estate | 1.7 | 6.3 | 0.6 | 1.1 | 0.3 | 1.0 |
| Personal | 73.0 | 20.7 | 50.0 | 51.1 | 75.9 | 49.7 |
| Hotels and restaurants | 0.9 | 2.8 | 1.2 | 4.8 | 0.3 | 0.5 |
| Services (Health and education) | 1.0 | 2.6 | 1.5 | 2.0 | 1.4 | 4.4 |
| Others | 1.3 | 4.9 | 0.1 | 2.3 | 1.1 | 1.8 |

Source: Banks and Bank of Tanzania computations

⁴ Bank loans include loans and advances provided by banks in Tanzania Mainland only, and do not include accrued interest on loans and advances as well as other sources of financing to the private sector such as securities, shares and other equity as well as prepaid insurance premiums.



Consolidated Zonal Economic Performance Report

6.2 Agent Banking Transactions

Agent banking services improved across all zones associated with increased number of agents following relaxation of eligibility criteria and integration of banking services with non-bank payment systems. The volume and value of cash deposits increased by 84.9 percent and 102.8 percent to 21,118,351 and TZS 18,259.6 billion, respectively. Likewise, volume and value of cash withdrawal recorded annual growth of 67.9 percent and 120.3 percent to 11,419,316 and TZS 5,452.2 billion, respectively (Table 6.4).

Table 6.4: Agent Banking Transactions

| Zone | Quarter ending | Number of agents | Cash deposit | | Cash withdrawal | |
|-------------------------------------|----------------|------------------|------------------------|--------------------------|------------------------|--------------------------|
| | | | Number of transactions | Value in billions of TZS | Number of transactions | Value in billions of TZS |
| Central | Sep-21 | 6,106 | 1,563,887 | 1,133.7 | 1,056,510 | 351.4 |
| | Jun-22 | 7,074 | 2,625,139 | 1,519.7 | 1,624,767 | 664.7 |
| | Sep-22 | 8,108 | 2,965,200 | 2,231.8 | 1,644,522 | 812.0 |
| Dar es Salaam | Sep-21 | 14,216 | 2,524,893 | 2,305.8 | 1,688,771 | 594.4 |
| | Jun-22 | 19,698 | 4,633,771 | 3,880.3 | 2,989,905 | 1,241.5 |
| | Sep-22 | 22,137 | 4,992,403 | 4,994.9 | 3,020,270 | 1,420.6 |
| Lake | Sep-21 | 8,120 | 2,723,633 | 2,309.2 | 1,251,265 | 555.8 |
| | Jun-22 | 10,600 | 4,410,311 | 3,445.3 | 1,943,214 | 986.7 |
| | Sep-22 | 12,279 | 4,780,029 | 4,595.5 | 2,128,402 | 1,111.1 |
| Northern | Sep-21 | 7,282 | 1,760,799 | 1,331.2 | 1,041,481 | 338.8 |
| | Jun-22 | 8,542 | 2,916,536 | 1,911.1 | 1,593,185 | 587.9 |
| | Sep-22 | 9,604 | 3,223,463 | 2,698.3 | 1,668,445 | 686.6 |
| South Eastern | Sep-21 | 3,318 | 937,358 | 596.2 | 690,776 | 201.7 |
| | Jun-22 | 3,859 | 1,528,213 | 793.3 | 1,059,531 | 436.4 |
| | Sep-22 | 4,552 | 1,688,805 | 1,169.3 | 1,251,188 | 507.8 |
| Southern Highlands | Sep-21 | 5,644 | 1,913,339 | 1,327.4 | 1,073,471 | 432.2 |
| | Jun-22 | 6,983 | 3,123,887 | 1,910.2 | 1,661,979 | 821.9 |
| | Sep-22 | 7,977 | 3,468,451 | 2,569.7 | 1,706,489 | 914.2 |
| Total | Sep-21 | 44,686 | 11,423,909 | 9,003.4 | 6,802,274 | 2,474.4 |
| | Jun-22 | 56,756 | 19,237,857 | 13,460.0 | 10,872,581 | 4,739.0 |
| | Sep-22 | 64,657 | 21,118,351 | 18,259.6 | 11,419,316 | 5,452.2 |
| Percentage change, Sep-21 to Sep-22 | | 44.7 | 84.9 | 102.8 | 67.9 | 120.3 |

Source: Bank of Tanzania

Note: Data do not include Zanzibar



Consolidated Zonal Economic Performance Report

7.0 STATISTICAL ANNEXES

Annex 1: Regional Gross Domestic Product at Current Prices, Tanzania Mainland

| Region | 2016 | 2017 | 2018 | 2019 | 2020 ^r | 2021 ^p |
|---------------|----------------------|----------------------|----------------------|----------------------|----------------------|----------------------|
| Dar es Salaam | 18,425,324.0 | 20,546,951.0 | 22,521,298.0 | 23,858,608.0 | 25,273,744.0 | 27,486,551.1 |
| Mwanza | 7,813,159.0 | 8,709,540.0 | 9,545,154.0 | 10,269,124.0 | 10,957,916.0 | 11,897,321.6 |
| Mbeya | 6,091,395.0 | 6,663,158.0 | 7,296,183.0 | 7,837,463.0 | 8,352,140.0 | 9,083,399.6 |
| Shinyanga | 5,653,566.0 | 6,084,991.0 | 6,600,149.0 | 7,164,597.0 | 7,589,553.0 | 8,264,046.2 |
| Morogoro | 5,202,454.0 | 5,700,918.0 | 6,176,007.0 | 6,705,640.0 | 7,163,146.0 | 7,740,305.3 |
| Tanga | 5,061,531.0 | 5,558,368.0 | 6,001,969.0 | 6,537,966.0 | 6,965,603.0 | 7,591,484.6 |
| Arusha | 5,094,048.0 | 5,570,252.0 | 5,985,038.0 | 6,551,945.0 | 6,943,552.0 | 7,495,466.8 |
| Geita | 4,894,472.0 | 5,310,503.0 | 5,751,274.0 | 6,201,522.0 | 6,668,974.0 | 7,272,867.0 |
| Kilimanjaro | 4,812,271.0 | 5,261,477.0 | 5,740,422.0 | 6,258,587.0 | 6,621,744.0 | 7,181,501.3 |
| Ruvuma | 4,226,976.0 | 4,513,232.0 | 4,891,412.0 | 5,308,638.0 | 5,623,511.0 | 6,105,869.8 |
| Tabora | 4,118,592.0 | 4,394,463.0 | 4,703,385.0 | 5,168,937.0 | 5,475,525.0 | 5,964,926.7 |
| Mara | 3,977,693.0 | 4,335,060.0 | 4,609,350.0 | 5,099,065.0 | 5,401,508.0 | 5,894,429.4 |
| Manyara | 3,620,023.0 | 3,990,619.0 | 4,366,862.0 | 4,693,920.0 | 4,972,333.0 | 5,447,678.3 |
| Dodoma | 3,164,808.0 | 3,479,914.0 | 3,863,134.0 | 4,302,876.0 | 4,657,713.0 | 5,076,172.9 |
| Iringa | 3,696,825.0 | 3,934,577.0 | 4,139,234.0 | 4,333,833.0 | 4,630,735.0 | 4,985,512.8 |
| Kigoma | 3,143,136.0 | 3,325,546.0 | 3,616,746.0 | 3,911,635.0 | 4,143,648.0 | 4,516,438.8 |
| Mtwara | 2,926,346.0 | 3,230,478.0 | 3,543,706.0 | 3,799,813.0 | 4,030,174.0 | 4,383,030.6 |
| Kagera | 2,855,913.0 | 3,026,215.0 | 3,241,177.0 | 3,572,624.0 | 3,784,529.0 | 4,125,878.0 |
| Rukwa | 2,518,427.0 | 2,543,247.0 | 2,753,744.0 | 3,004,180.0 | 3,182,368.0 | 3,470,996.2 |
| Coast | 1,950,914.0 | 2,315,568.0 | 2,504,505.0 | 2,723,661.0 | 2,984,829.0 | 3,246,162.0 |
| Lindi | 2,124,305.0 | 2,351,591.0 | 2,523,610.0 | 2,766,032.0 | 2,959,980.0 | 3,229,137.0 |
| Singida | 2,005,093.0 | 2,220,957.0 | 2,412,102.0 | 2,612,375.0 | 2,767,324.0 | 3,019,613.3 |
| Songwe | 1,972,374.0 | 2,173,229.0 | 2,351,544.0 | 2,556,236.0 | 2,707,855.0 | 2,944,937.1 |
| Njombe | 1,629,302.0 | 1,889,990.0 | 2,173,489.0 | 2,517,247.0 | 2,666,554.0 | 2,930,020.1 |
| Katavi | 1,383,376.0 | 1,613,656.0 | 1,732,408.0 | 1,885,329.0 | 1,997,154.0 | 2,172,012.1 |
| Total | 108,362,324.0 | 118,744,498.0 | 129,043,901.0 | 139,641,854.0 | 148,522,111.0 | 161,525,758.6 |

Source: National Bureau of Statistics

Note: r denotes revised data; p, provisional data; and GDP for Sinyanga includes Simiyu region



Consolidated Zonal Economic Performance Report

Annex 2: Regional per Capita Gross Domestic Product at Current Prices, Tanzania Mainland

| TZS | | | | | | |
|--------------------------|--------------------|--------------------|--------------------|--------------------|--------------------|--------------------|
| Region | 2016 | 2017 | 2018 | 2019 | 2020 ^r | 2021 ^p |
| Dar es Salaam | 3,771,149.0 | 4,095,226.0 | 4,375,557.0 | 4,522,689.0 | 4,678,751.0 | 4,973,466.9 |
| Iringa | 3,546,649.0 | 3,681,665.0 | 3,779,528.0 | 3,862,146.0 | 4,028,544.0 | 4,311,608.3 |
| Mbeya | 3,135,211.0 | 3,321,495.0 | 3,524,025.0 | 3,668,170.0 | 3,788,604.0 | 3,994,044.4 |
| Ruvuma | 2,801,600.0 | 2,923,326.0 | 3,096,201.0 | 3,283,035.0 | 3,396,983.0 | 3,602,161.9 |
| Kilimanjaro | 2,698,623.0 | 2,885,925.0 | 3,079,082.0 | 3,281,940.0 | 3,393,587.0 | 3,596,231.3 |
| Arusha | 2,686,226.0 | 2,859,151.0 | 2,992,658.0 | 3,193,186.0 | 3,300,051.0 | 3,520,262.4 |
| Njombe | 2,117,767.0 | 2,403,507.0 | 2,705,703.0 | 3,068,485.0 | 3,183,728.0 | 3,427,196.6 |
| Lindi | 2,251,998.0 | 2,440,764.0 | 2,565,327.0 | 2,753,807.0 | 2,885,533.0 | 3,081,875.7 |
| Tanga | 2,266,384.0 | 2,432,853.0 | 2,568,178.0 | 2,733,502.0 | 2,843,991.0 | 2,986,909.3 |
| Geita | 2,375,946.0 | 2,471,830.0 | 2,567,592.0 | 2,655,746.0 | 2,739,023.0 | 2,907,625.7 |
| Mtwara | 2,133,512.0 | 2,311,244.0 | 2,488,413.0 | 2,618,614.0 | 2,725,164.0 | 2,864,332.6 |
| Mwanza | 2,233,942.0 | 2,391,919.0 | 2,518,768.0 | 2,604,064.0 | 2,670,009.0 | 2,811,777.5 |
| Manyara | 2,212,877.0 | 2,357,593.0 | 2,494,119.0 | 2,591,996.0 | 2,654,594.0 | 2,785,051.6 |
| Morogoro | 2,109,028.0 | 2,252,199.0 | 2,378,784.0 | 2,518,581.0 | 2,623,807.0 | 2,765,125.5 |
| Rukwa | 2,235,234.0 | 2,191,381.0 | 2,303,328.0 | 2,438,539.0 | 2,505,705.0 | 2,649,601.3 |
| Katavi | 2,047,174.0 | 2,284,104.0 | 2,346,683.0 | 2,444,393.0 | 2,478,206.0 | 2,578,974.2 |
| Mara | 1,948,605.0 | 2,041,293.0 | 2,086,488.0 | 2,218,608.0 | 2,258,302.0 | 2,391,683.0 |
| Coast | 1,615,487.0 | 1,872,708.0 | 1,979,057.0 | 2,102,779.0 | 2,251,254.0 | 2,367,093.4 |
| Songwe | 1,744,604.0 | 1,863,682.0 | 1,955,678.0 | 2,061,530.0 | 2,117,414.0 | 2,232,596.1 |
| Shinyanga | 1,650,147.0 | 1,705,949.0 | 1,777,927.0 | 1,854,663.0 | 1,887,800.0 | 1,974,839.5 |
| Tabora | 1,543,075.0 | 1,586,969.0 | 1,638,512.0 | 1,737,793.0 | 1,777,039.0 | 1,869,183.3 |
| Dodoma | 1,347,534.0 | 1,438,016.0 | 1,549,599.0 | 1,675,239.0 | 1,759,347.0 | 1,826,417.3 |
| Singida | 1,313,077.0 | 1,415,250.0 | 1,495,549.0 | 1,575,537.0 | 1,622,891.0 | 1,721,195.3 |
| Kigoma | 1,286,600.0 | 1,315,117.0 | 1,382,442.0 | 1,445,098.0 | 1,479,389.0 | 1,558,162.1 |
| Kagera | 1,012,460.0 | 1,036,396.0 | 1,072,514.0 | 1,142,177.0 | 1,168,661.0 | 1,230,415.0 |
| Tanzania Mainland | 2,225,099.0 | 2,327,395.0 | 2,452,406.0 | 2,573,324.0 | 2,653,790.0 | 2,798,224.2 |

Source: National Bureau of Statistics

Note: r denotes revised data; and p, provisional data



Consolidated Zonal Economic Performance Report

Annex 3: Zonal Consumer Price Index

Base 2020=100

| Zone | Central | | | Dar es Salaam | | | Lake | | | Northern | | | South Eastern | | | Southern Highlands | | |
|-----------------|----------|-------|----------|---------------|-------|----------|----------|-------|----------|----------|-------|----------|---------------|-------|----------|--------------------|-------|----------|
| | Headline | Food | Non-food | Headline | Food | Non-food | Headline | Food | Non-food | Headline | Food | Non-food | Headline | Food | Non-food | Headline | Food | Non-food |
| Old weights (%) | 100.0 | 40.7 | 59.3 | 100.0 | 29.5 | 70.5 | 100.0 | 41.4 | 58.6 | 100.0 | 40.6 | 59.4 | 100.0 | 41.4 | 58.6 | 100.0 | 37.2 | 62.8 |
| Jul-20 | 101.2 | 101.1 | 101.2 | 100.0 | 99.3 | 100.4 | 99.8 | 99.0 | 100.3 | 101.0 | 101.1 | 101.0 | 101.8 | 103.5 | 100.2 | 100.7 | 101.1 | 100.5 |
| Aug-20 | 100.7 | 100.2 | 101.0 | 100.1 | 99.1 | 100.5 | 98.9 | 97.2 | 100.1 | 100.4 | 99.4 | 101.0 | 100.9 | 101.9 | 99.8 | 100.0 | 99.7 | 100.2 |
| Sep-20 | 98.9 | 98.0 | 99.5 | 100.7 | 101.3 | 100.5 | 99.1 | 97.1 | 100.5 | 99.8 | 97.7 | 101.2 | 99.9 | 100.0 | 99.9 | 100.1 | 99.6 | 100.5 |
| Oct-20 | 98.1 | 97.7 | 98.4 | 99.9 | 99.9 | 99.9 | 99.8 | 99.2 | 100.3 | 99.1 | 97.7 | 100.1 | 99.7 | 99.5 | 100.0 | 102.1 | 100.5 | 103.0 |
| Nov-20 | 98.0 | 96.2 | 99.3 | 100.2 | 99.9 | 100.3 | 100.2 | 100.0 | 100.4 | 98.7 | 95.9 | 100.6 | 100.7 | 100.8 | 100.5 | 101.9 | 99.8 | 103.2 |
| Dec-20 | 99.0 | 97.2 | 100.2 | 100.1 | 100.3 | 100.0 | 100.7 | 101.3 | 100.2 | 100.1 | 97.7 | 101.8 | 102.4 | 103.6 | 101.2 | 102.8 | 101.1 | 103.8 |

Base: 2020 = 100

| Zone | Central | | | Dar es Salaam | | | Lake | | | Northern | | | South Eastern | | | Southern Highlands | | |
|-----------------|----------|-------|----------|---------------|-------|----------|----------|-------|----------|----------|-------|----------|---------------|-------|----------|--------------------|-------|----------|
| | Headline | Food | Non-food | Headline | Food | Non-food | Headline | Food | Non-food | Headline | Food | Non-food | Headline | Food | Non-food | Headline | Food | Non-food |
| New weights (%) | 100.0 | 27.7 | 72.3 | 100.0 | 23.1 | 76.9 | 100.0 | 29.9 | 70.1 | 100.0 | 30.2 | 69.8 | 100.0 | 33.7 | 66.3 | 100.0 | 27.0 | 73.0 |
| Jan-21 | 100.7 | 98.5 | 101.5 | 101.5 | 100.4 | 101.8 | 101.9 | 100.8 | 102.3 | 100.8 | 97.7 | 102.2 | 101.1 | 102.2 | 100.6 | 103.3 | 104.9 | 102.7 |
| Feb-21 | 101.0 | 99.3 | 101.6 | 102.1 | 102.0 | 102.1 | 103.4 | 103.4 | 103.3 | 101.4 | 99.1 | 102.4 | 102.5 | 104.1 | 101.7 | 104.3 | 107.0 | 103.3 |
| Mar-21 | 101.6 | 100.4 | 102.1 | 102.5 | 103.0 | 102.3 | 104.7 | 105.1 | 104.6 | 103.0 | 101.1 | 103.9 | 103.7 | 105.9 | 102.6 | 105.0 | 108.7 | 103.7 |
| Apr-21 | 101.4 | 101.1 | 101.5 | 103.0 | 103.7 | 102.8 | 103.9 | 104.5 | 103.7 | 103.8 | 103.3 | 104.0 | 104.0 | 106.1 | 103.0 | 105.3 | 107.9 | 104.3 |
| May-21 | 101.7 | 101.5 | 101.8 | 102.8 | 103.4 | 102.6 | 105.1 | 106.3 | 104.6 | 104.0 | 104.7 | 103.8 | 104.7 | 108.1 | 103.0 | 105.6 | 109.4 | 104.2 |
| Jun-21 | 101.7 | 101.3 | 101.9 | 102.9 | 103.3 | 102.8 | 106.1 | 109.1 | 104.7 | 104.3 | 105.7 | 103.7 | 105.1 | 107.8 | 103.7 | 105.6 | 109.2 | 104.3 |
| Jul-21 | 101.2 | 99.5 | 101.8 | 102.8 | 102.8 | 102.9 | 107.2 | 112.3 | 105.0 | 103.9 | 104.3 | 103.7 | 105.1 | 107.5 | 103.9 | 105.5 | 108.8 | 104.3 |
| Aug-21 | 100.5 | 96.0 | 102.2 | 102.2 | 100.1 | 102.9 | 106.8 | 109.6 | 105.6 | 103.0 | 101.9 | 103.4 | 105.3 | 105.8 | 105.0 | 104.9 | 105.8 | 104.6 |
| Sep-21 | 100.4 | 96.1 | 102.0 | 102.4 | 101.0 | 102.9 | 106.7 | 109.3 | 105.6 | 102.5 | 100.8 | 103.2 | 105.0 | 105.0 | 105.0 | 105.1 | 105.4 | 104.9 |
| Oct-21 | 100.3 | 96.1 | 101.9 | 102.6 | 101.4 | 102.9 | 106.4 | 108.7 | 105.5 | 102.1 | 100.2 | 102.9 | 104.8 | 104.8 | 104.8 | 105.1 | 105.8 | 104.9 |
| Nov-21 | 100.6 | 96.8 | 102.1 | 104.0 | 104.2 | 104.0 | 106.6 | 108.9 | 105.6 | 102.2 | 100.2 | 103.1 | 104.8 | 104.7 | 104.8 | 105.6 | 107.2 | 105.0 |
| Dec-21 | 101.4 | 99.0 | 102.3 | 104.9 | 106.5 | 104.5 | 107.7 | 111.6 | 106.0 | 103.4 | 101.7 | 104.1 | 105.1 | 105.4 | 105.0 | 106.1 | 108.9 | 105.1 |
| Jan-22 | 102.9 | 101.9 | 103.3 | 104.7 | 105.3 | 104.5 | 108.4 | 113.2 | 106.4 | 103.8 | 102.5 | 104.3 | 105.7 | 106.1 | 105.6 | 107.5 | 111.1 | 106.2 |
| Feb-22 | 103.6 | 103.2 | 103.8 | 105.2 | 106.5 | 104.8 | 109.4 | 116.0 | 106.5 | 104.5 | 104.9 | 104.3 | 106.0 | 106.8 | 105.6 | 107.8 | 111.6 | 106.4 |
| Mar-22 | 104.6 | 105.8 | 104.2 | 105.8 | 107.2 | 105.4 | 110.5 | 118.4 | 107.1 | 105.1 | 106.8 | 104.4 | 106.9 | 108.6 | 106.0 | 109.0 | 114.7 | 106.9 |
| Apr-22 | 105.0 | 106.1 | 104.5 | 106.7 | 110.5 | 105.6 | 111.7 | 119.5 | 108.4 | 105.4 | 106.7 | 104.8 | 107.4 | 110.3 | 105.9 | 110.3 | 117.7 | 107.6 |
| May-22 | 105.0 | 105.6 | 104.8 | 107.9 | 112.0 | 106.6 | 111.9 | 119.5 | 108.7 | 106.2 | 106.8 | 105.9 | 107.7 | 110.2 | 106.4 | 110.9 | 117.1 | 108.7 |
| Jun-22 | 106.0 | 106.7 | 105.7 | 109.0 | 111.6 | 108.2 | 111.7 | 118.9 | 108.6 | 106.6 | 108.2 | 105.9 | 108.2 | 111.8 | 106.4 | 111.1 | 117.1 | 108.9 |
| Jul-22 | 105.7 | 105.8 | 105.7 | 108.9 | 112.0 | 108.0 | 112.7 | 121.9 | 108.7 | 106.4 | 107.1 | 106.1 | 107.8 | 110.9 | 106.3 | 111.4 | 117.6 | 109.1 |
| Aug-22 | 105.3 | 104.3 | 105.7 | 107.8 | 108.4 | 107.6 | 112.7 | 120.9 | 109.2 | 106.2 | 106.4 | 106.1 | 107.5 | 109.7 | 106.3 | 111.1 | 116.5 | 109.2 |
| Sep-22 | 105.5 | 105.0 | 105.7 | 108.1 | 108.6 | 108.0 | 112.5 | 121.9 | 108.5 | 106.5 | 107.1 | 106.3 | 107.3 | 109.0 | 106.4 | 111.1 | 116.2 | 109.3 |

Source: National Bureau of Statistics



Consolidated Zonal Economic Performance Report

Annex 4: Zonal Consumer Price Index – Twelve-Month Percentage Change

Base 2020=100

| Zone | Central | | | Dar es Salaam | | | Lake | | | Northern | | | South Eastern | | | Southern Highlands | | |
|-----------------|----------|------|----------|---------------|------|----------|----------|------|----------|----------|------|----------|---------------|------|----------|--------------------|------|----------|
| | Headline | Food | Non-food | Headline | Food | Non-food | Headline | Food | Non-food | Headline | Food | Non-food | Headline | Food | Non-food | Headline | Food | Non-food |
| Old weights (%) | 100.0 | 40.7 | 59.3 | 100.0 | 29.5 | 70.5 | 100.0 | 41.4 | 58.6 | 100.0 | 40.6 | 59.4 | 100.0 | 41.4 | 58.6 | 100.0 | 37.2 | 62.8 |
| Jul-20 | 2.5 | 1.5 | 3.2 | 3.0 | 4.0 | 2.5 | 0.6 | -1.1 | 1.8 | 2.0 | -2.0 | 4.9 | 7.7 | 13.0 | 3.1 | 6.4 | 6.3 | 6.5 |
| Aug-20 | 2.9 | 2.4 | 3.2 | 3.8 | 6.3 | 2.8 | -0.4 | -3.1 | 1.6 | 1.3 | -3.5 | 4.8 | 7.9 | 13.7 | 2.8 | 5.9 | 5.1 | 6.3 |
| Sep-20 | 1.6 | 1.8 | 1.5 | 4.3 | 8.3 | 2.7 | 0.0 | -3.1 | 2.1 | 1.6 | -3.8 | 5.4 | 6.4 | 11.3 | 2.2 | 6.0 | 5.9 | 6.1 |
| Oct-20 | 0.6 | 0.4 | 0.8 | 3.0 | 4.4 | 2.4 | 1.0 | -0.9 | 2.5 | 1.2 | -2.6 | 3.9 | 7.5 | 13.2 | 2.6 | 8.2 | 6.8 | 9.1 |
| Nov-20 | -0.6 | -3.3 | 1.2 | 2.9 | 3.9 | 2.4 | 1.2 | -0.5 | 2.5 | 0.8 | -4.0 | 4.3 | 8.0 | 13.8 | 3.0 | 7.4 | 5.4 | 8.6 |
| Dec-20 | 0.6 | -1.8 | 2.2 | 2.0 | 2.1 | 1.9 | 1.4 | -0.1 | 2.5 | 2.4 | -1.9 | 5.4 | 7.7 | 13.1 | 3.1 | 7.4 | 5.7 | 8.5 |

Base: 2020 = 100

| Zone | Central | | | Dar es Salaam | | | Lake | | | Northern | | | South Eastern | | | Southern Highlands | | |
|-----------------|----------|------|----------|---------------|------|----------|----------|------|----------|----------|------|----------|---------------|------|----------|--------------------|------|----------|
| | Headline | Food | Non-food | Headline | Food | Non-food | Headline | Food | Non-food | Headline | Food | Non-food | Headline | Food | Non-food | Headline | Food | Non-food |
| New weights (%) | 100.0 | 27.7 | 72.3 | 100.0 | 23.1 | 76.9 | 100.0 | 29.9 | 70.1 | 100.0 | 30.2 | 69.8 | 100.0 | 33.7 | 66.3 | 100.0 | 27.0 | 73.0 |
| Jan-21 | 2.0 | -0.9 | 3.3 | 3.2 | 1.3 | 3.9 | 2.4 | -0.6 | 4.2 | 2.7 | -2.4 | 5.5 | 5.7 | 10.2 | 2.2 | 7.5 | 8.3 | 7.3 |
| Feb-21 | 1.4 | -1.4 | 2.8 | 2.3 | 1.3 | 2.8 | 3.4 | 2.2 | 4.2 | 2.6 | -1.9 | 5.2 | 4.9 | 8.5 | 2.4 | 8.2 | 9.8 | 7.8 |
| Mar-21 | 0.6 | -1.7 | 1.8 | 1.2 | 1.2 | 1.3 | 5.1 | 5.6 | 4.7 | 3.8 | -0.3 | 6.3 | 4.7 | 6.7 | 3.7 | 6.6 | 9.5 | 5.6 |
| Apr-21 | -0.1 | -1.8 | 0.9 | 2.7 | 4.2 | 2.1 | 3.5 | 3.9 | 3.5 | 3.1 | 1.2 | 4.3 | 3.8 | 5.6 | 2.9 | 5.4 | 7.2 | 4.9 |
| May-21 | -0.2 | -1.7 | 0.7 | 3.1 | 4.0 | 2.8 | 4.3 | 4.2 | 4.6 | 1.7 | 1.0 | 2.4 | 4.0 | 7.6 | 2.1 | 5.0 | 7.3 | 4.5 |
| Jun-21 | 0.4 | 0.1 | 0.5 | 3.4 | 3.7 | 3.3 | 4.9 | 7.3 | 4.0 | 2.5 | 3.3 | 2.3 | 3.7 | 5.8 | 2.9 | 4.7 | 7.0 | 4.2 |
| Jul-21 | 0.0 | -1.6 | 0.6 | 2.8 | 3.6 | 2.5 | 7.4 | 13.5 | 4.6 | 2.8 | 3.2 | 2.7 | 3.3 | 3.9 | 3.7 | 4.8 | 7.6 | 3.9 |
| Aug-21 | -0.2 | -4.2 | 1.2 | 2.1 | 1.0 | 2.4 | 8.0 | 12.7 | 5.5 | 2.6 | 2.5 | 2.4 | 4.4 | 3.8 | 5.1 | 4.9 | 6.1 | 4.4 |
| Sep-21 | 1.5 | -1.9 | 2.5 | 1.7 | -0.3 | 2.3 | 7.6 | 12.6 | 5.0 | 2.7 | 3.1 | 2.0 | 5.1 | 5.0 | 5.1 | 4.9 | 5.9 | 4.4 |
| Oct-21 | 2.2 | -1.7 | 3.6 | 2.7 | 1.5 | 3.0 | 6.6 | 9.6 | 5.2 | 3.0 | 2.6 | 2.8 | 5.1 | 5.4 | 4.9 | 3.0 | 5.3 | 1.8 |
| Nov-21 | 2.7 | 0.7 | 2.8 | 3.8 | 4.3 | 3.7 | 6.3 | 8.9 | 5.2 | 3.6 | 4.5 | 2.5 | 4.1 | 3.9 | 4.3 | 3.6 | 7.4 | 1.7 |
| Dec-21 | 2.4 | 1.8 | 2.1 | 4.8 | 6.1 | 4.4 | 7.0 | 10.2 | 5.8 | 3.2 | 4.1 | 2.3 | 2.7 | 1.7 | 3.8 | 3.2 | 7.7 | 1.2 |
| Jan-22 | 2.2 | 3.4 | 1.8 | 3.2 | 4.9 | 2.7 | 6.4 | 12.3 | 4.0 | 2.9 | 4.9 | 2.1 | 4.5 | 3.8 | 5.0 | 4.1 | 5.9 | 3.3 |
| Feb-22 | 2.6 | 3.9 | 2.2 | 3.0 | 4.4 | 2.6 | 5.8 | 12.2 | 3.1 | 3.1 | 5.9 | 1.9 | 3.4 | 2.6 | 3.8 | 3.4 | 4.3 | 3.1 |
| Mar-22 | 2.9 | 5.3 | 2.0 | 3.2 | 4.1 | 3.0 | 5.5 | 12.6 | 2.4 | 2.1 | 5.6 | 0.6 | 3.0 | 2.6 | 3.3 | 3.8 | 5.5 | 3.1 |
| Apr-22 | 3.6 | 5.0 | 3.0 | 3.6 | 6.5 | 2.7 | 7.5 | 14.4 | 4.5 | 1.5 | 3.3 | 0.8 | 3.2 | 4.0 | 2.8 | 4.8 | 9.0 | 3.1 |
| May-22 | 3.2 | 4.0 | 2.9 | 4.9 | 8.3 | 3.9 | 6.5 | 12.4 | 3.9 | 2.0 | 2.0 | 2.0 | 2.9 | 2.0 | 3.3 | 5.1 | 7.1 | 4.3 |
| Jun-22 | 4.2 | 5.3 | 3.7 | 5.9 | 8.1 | 5.2 | 5.3 | 8.9 | 3.7 | 2.2 | 2.4 | 2.2 | 3.0 | 3.7 | 2.6 | 5.2 | 7.2 | 4.5 |
| Jul-22 | 4.5 | 6.3 | 3.8 | 5.9 | 8.9 | 5.0 | 5.1 | 8.5 | 3.6 | 2.4 | 2.7 | 2.3 | 2.6 | 3.2 | 2.3 | 5.5 | 8.1 | 4.6 |
| Aug-22 | 4.8 | 8.7 | 3.4 | 5.4 | 8.3 | 4.6 | 5.5 | 10.3 | 3.3 | 3.2 | 4.4 | 2.6 | 2.1 | 3.7 | 1.3 | 5.9 | 10.2 | 4.3 |
| Sep-22 | 5.1 | 9.3 | 3.6 | 5.6 | 7.5 | 5.0 | 5.5 | 11.5 | 2.8 | 3.9 | 6.2 | 3.0 | 2.2 | 3.8 | 1.3 | 5.8 | 10.2 | 4.1 |

Source: National Bureau of Statistics



Consolidated Zonal Economic Performance Report

Annex 5: Agent Banking Transactions in Tanzania Mainland

| Region | Quarter ending | | | | | | | | | | | | | | |
|---------------|------------------|--------------------------|--------------------|------------------|--------------------------|--------------------|------------------|--------------------------|--------------------|------------------|--------------------------|------------------|---------------------|--------------------------|--------------------|
| | Sep-21 | | | Dec-21 | | | Mar-22 | | | Jun-22 | | | Sep-22 ^p | | |
| | Number of agents | Value in millions of TZS | | Number of agents | Value in millions of TZS | | Number of agents | Value in millions of TZS | | Number of agents | Value in millions of TZS | | Number of agents | Value in millions of TZS | |
| | Cash deposit | Cash withdrawal | | Cash deposit | Cash withdrawal | | Cash deposit | Cash withdrawal | | Cash deposit | Cash withdrawal | | Cash deposit | Cash withdrawal | |
| Arusha | 3,928 | 610,944.0 | 141,147.1 | 3,944 | 727,786.7 | 185,353.5 | 4,259 | 744,186.0 | 189,195.4 | 4,512 | 873,044.3 | 249,922.8 | 4,980 | 1,244,038.0 | 290,135.9 |
| Coast | 1,033 | 190,144.3 | 65,795.1 | 1,078 | 222,749.4 | 85,728.9 | 1,197 | 236,230.5 | 87,107.6 | 1,333 | 253,554.2 | 127,582.8 | 1,640 | 351,200.9 | 144,019.9 |
| Dar es Salaam | 14,216 | 2,305,828.5 | 594,411.2 | 16,059 | 3,067,387.2 | 902,367.9 | 18,012 | 3,337,917.8 | 940,702.7 | 19,698 | 3,880,335.6 | 1,241,469.2 | 22,137 | 4,994,939.6 | 1,420,575.8 |
| Dodoma | 2,497 | 439,807.9 | 131,371.2 | 2,676 | 503,663.6 | 173,013.4 | 3,014 | 512,478.1 | 166,930.2 | 3,292 | 578,480.8 | 235,878.9 | 3,747 | 761,385.4 | 270,654.6 |
| Geita | 599 | 312,035.0 | 78,929.2 | 657 | 369,378.4 | 90,812.1 | 733 | 396,725.3 | 97,841.6 | 802 | 455,580.3 | 134,069.8 | 997 | 558,156.8 | 137,475.8 |
| Iringa | 1,198 | 271,038.6 | 82,098.2 | 1,217 | 330,886.5 | 108,726.5 | 1,358 | 361,665.0 | 105,074.8 | 1,480 | 364,481.4 | 141,444.5 | 1,675 | 450,688.5 | 151,999.9 |
| Kagera | 1,046 | 393,336.2 | 73,621.4 | 1,041 | 433,372.1 | 84,455.8 | 1,133 | 445,265.0 | 94,693.1 | 1,211 | 616,365.2 | 145,633.7 | 1,439 | 890,549.8 | 179,160.0 |
| Katavi | 180 | 54,386.4 | 21,075.3 | 204 | 63,078.1 | 26,098.8 | 225 | 61,366.5 | 27,173.7 | 251 | 88,042.8 | 57,227.8 | 308 | 129,778.7 | 56,565.1 |
| Kigoma | 571 | 178,090.1 | 41,262.7 | 627 | 186,150.4 | 45,438.9 | 713 | 197,733.0 | 47,969.7 | 792 | 231,439.2 | 77,252.5 | 977 | 293,303.5 | 86,730.1 |
| Kilimanjaro | 1,770 | 310,472.4 | 70,884.9 | 1,881 | 409,504.3 | 93,650.6 | 2,070 | 443,452.0 | 96,112.3 | 2,224 | 485,592.0 | 127,530.1 | 2,553 | 726,296.2 | 142,267.3 |
| Lindi | 594 | 84,190.6 | 33,484.2 | 629 | 121,419.9 | 75,007.8 | 708 | 104,560.1 | 43,797.5 | 763 | 103,834.4 | 72,904.7 | 880 | 178,754.4 | 103,009.8 |
| Manyara | 536 | 136,845.8 | 61,274.9 | 560 | 198,232.6 | 73,806.4 | 614 | 185,744.2 | 69,789.7 | 674 | 187,173.2 | 98,445.0 | 797 | 287,519.9 | 133,266.9 |
| Mara | 939 | 205,104.9 | 52,250.2 | 935 | 233,992.3 | 61,699.3 | 1,014 | 261,068.1 | 69,588.6 | 1,102 | 312,967.6 | 96,216.7 | 1,262 | 440,193.5 | 108,758.4 |
| Mbeya | 2,344 | 456,865.5 | 151,663.0 | 2,559 | 578,654.7 | 197,772.1 | 2,819 | 588,419.1 | 190,853.1 | 3,047 | 666,356.0 | 270,839.3 | 3,424 | 923,280.5 | 298,827.5 |
| Morogoro | 2,054 | 386,368.6 | 121,776.1 | 2,151 | 465,136.6 | 176,326.2 | 2,391 | 486,843.0 | 162,962.6 | 2,644 | 529,187.7 | 243,663.6 | 3,062 | 844,048.1 | 322,062.9 |
| Mtwara | 907 | 132,804.3 | 42,617.4 | 985 | 204,825.1 | 110,756.4 | 1,091 | 172,322.3 | 61,669.8 | 1,197 | 163,597.6 | 89,579.7 | 1,380 | 255,768.5 | 97,599.0 |
| Mwanza | 3,415 | 604,866.4 | 159,240.4 | 3,471 | 726,165.0 | 193,127.6 | 3,855 | 774,715.6 | 207,789.2 | 4,168 | 910,537.4 | 287,571.2 | 4,685 | 1,243,622.4 | 319,438.8 |
| Njombe | 935 | 244,201.3 | 87,325.8 | 1,001 | 318,732.9 | 124,839.2 | 1,078 | 334,956.0 | 116,386.2 | 1,217 | 361,108.1 | 164,171.2 | 1,386 | 461,082.4 | 181,087.7 |
| Rukwa | 475 | 100,370.9 | 33,338.0 | 180 | 101,713.3 | 39,572.6 | 524 | 96,699.6 | 35,818.6 | 288 | 131,009.4 | 64,505.9 | 347 | 158,124.1 | 68,361.7 |
| Ruvuma | 784 | 189,026.7 | 59,853.2 | 485 | 292,820.7 | 107,788.4 | 998 | 275,849.2 | 99,485.3 | 566 | 272,348.3 | 146,363.8 | 652 | 383,569.9 | 163,181.5 |
| Shinyanga | 1,176 | 552,864.6 | 128,222.0 | 888 | 702,033.8 | 150,754.6 | 1,302 | 752,239.9 | 153,084.1 | 1,084 | 834,625.2 | 213,712.7 | 1,226 | 849,249.9 | 212,845.1 |
| Simiyu | 374 | 62,869.5 | 22,303.0 | 1,202 | 70,073.4 | 21,442.6 | 449 | 69,095.7 | 24,019.3 | 1,441 | 83,796.4 | 32,259.0 | 1,693 | 320,464.0 | 66,669.5 |
| Singida | 576 | 124,168.6 | 33,431.0 | 409 | 159,156.7 | 45,708.2 | 632 | 149,562.8 | 39,253.2 | 475 | 180,064.5 | 65,106.6 | 543 | 248,308.9 | 79,201.9 |
| Songwe | 512 | 200,531.4 | 56,680.5 | 584 | 266,292.5 | 84,081.7 | 611 | 260,018.7 | 77,796.9 | 700 | 299,209.1 | 123,692.2 | 837 | 446,771.3 | 157,311.9 |
| Tabora | 979 | 183,323.8 | 64,828.7 | 583 | 205,436.2 | 76,631.0 | 1,034 | 191,936.1 | 72,578.7 | 663 | 232,007.0 | 120,003.3 | 756 | 378,106.0 | 140,085.7 |
| Tanga | 1,048 | 272,937.7 | 65,503.2 | 968 | 317,895.0 | 73,973.5 | 1,172 | 312,017.1 | 77,840.3 | 1,132 | 365,278.2 | 111,981.4 | 1,274 | 440,416.8 | 120,887.1 |
| Total | 44,686 | 9,003,424.1 | 2,474,387.9 | 46,974 | 11,276,537.5 | 3,408,934.0 | 53,006 | 11,753,066.5 | 3,355,514.2 | 56,756 | 13,460,016 | 4,739,028 | 64,657 | 18,259,618.1 | 5,452,179.8 |

Source: Bank of Tanzania

Note: p denotes provisional data



Consolidated Zonal Economic Performance Report

Annex 6a: Value of Selected Manufactured Commodities by Zone and Type

Millions of TZS

| Central Zone | | | | Dar es Salaam Zone | | | |
|-------------------------|------------------|------------------|-------------------|--------------------------------------|---------------------|---------------------|---------------------|
| | Quarter ending | | | Commodity | Quarter ending | | |
| | Sep-21 | Jun-22 | Sep-22 | | Sep-21 ^r | Jun-22 ^f | Sep-22 ^P |
| Sugar | 105,492.8 | 37,782.4 | 130,116.30 | Wheat flour | 220,368.2 | 200,862.5 | 271,475.8 |
| Tobacco, cured | 54,972.6 | 83,985.7 | 70,789.30 | Soap and laundry / toilet detergents | 179,265.2 | 174,882.3 | 205,597.5 |
| Knitted fabrics | 11,538.0 | 10,416.1 | 11,008.70 | Vegetable oils and fats | 115,676.8 | 114,434.6 | 186,990.1 |
| Textile bags | 1,237.1 | 1,703.2 | 1,869.60 | Cement | 98,426.3 | 127,523.4 | 148,347.0 |
| Canvas | 928.0 | 969.5 | 955.8 | Cigarettes | 76,657.8 | 137,796.2 | 137,499.9 |
| Wine | 4,030.7 | 778.3 | 2,478.50 | Corrugated Iron sheets | 123,812.0 | 112,028.8 | 112,922.9 |
| Vegetable oils and fats | 20,251.0 | 37,773.7 | 12,558.50 | Soft drinks | 90,784.1 | 100,559.0 | 103,093.8 |
| Milled rice | 14,212.0 | 15,023.6 | 20,871.00 | Bottled beer | 59,616.8 | 96,113.3 | 97,409.2 |
| Plastic articles | 465.3 | 578.4 | 522.7 | Rolled steel | 74,623.4 | 52,687.2 | 80,798.5 |
| Standardized milk | 365.4 | 341.3 | 376.4 | Plastic articles | 44,894.8 | 57,506.8 | 59,554.8 |
| Mattress | n.a | 2,975.0 | 4,801.60 | Paints | 53,608.8 | 54,117.0 | 57,410.8 |
| Others | 10,214.8 | 10,499.8 | 2,118.20 | Spirits | 43,494.0 | 54,131.2 | 52,239.9 |
| Total | 223,707.7 | 202,827.0 | 258,466.60 | Foam mattresses | 49,149.7 | 44,703.1 | 52,103.5 |
| | | | | Glass | 48,071.6 | 48,687.5 | 57,093.0 |
| | | | | Woven fabrics | 47,151.3 | 8,575.4 | 11,469.8 |
| | | | | Standardized milk | 1,738.8 | 1,242.6 | 1,341.8 |
| | | | | Others | 181,453.8 | 205,268.7 | 214,780.8 |
| | | | | Total | 1,508,793.4 | 1,591,119.6 | 1,850,129.3 |

Source: National Bureau of Statistics and respective industries

Note: p denotes provisional data; and r, revised data



Consolidated Zonal Economic Performance Report

Annex 6b: Value of Selected Manufactured Commodities by Zone and Type

Millions of TZS

| Lake Zone | Quarter ending | | | Northern Zone | Quarter ending | | |
|-------------------------|----------------|-----------|----------|----------------------------|----------------|-----------|-----------|
| | Sep-21 | Jun-22 | Sep-22 | | Commodity | Sep-21 | Jun-22 |
| Sugar | 43,769.0 | 40,187.0 | 45082.1 | Textiles | 36,494.7 | 31,124.9 | 36,684.6 |
| Coffee | 883.1 | 821.4 | 909.6 | Cement | 65,267.6 | 19,988.8 | 54,896.6 |
| Tea | 108.4 | 74.9 | 111.6 | Sugar | 60,925.4 | 55,183.2 | 59,390.7 |
| Milk | 752.5 | 400.3 | 775.1 | Beverages | 80,714.3 | 72,122.0 | 81,895.6 |
| Soft drinks | 36,007.1 | 64,913.6 | 64453.3 | Electrical goods | 13,894.1 | 9,489.8 | 14,311.0 |
| Beer | 47,671.1 | 87,595.6 | 83034.2 | Mattresses | 12,203.2 | 10,526.2 | 14,563.7 |
| Rolled steel | 3,562.3 | 10,413.8 | 17953.0 | Rolled steel | 15,226.3 | 16,002.6 | 11,666.9 |
| Foam mattresses | 11,618.4 | 12,385.6 | 15379.7 | Food products | 34,480.3 | 34,913.3 | 29,482.8 |
| Vegetable oils and fats | 16,873.2 | 5,610.8 | 9024.6 | Coffee and tea products | 9,684.3 | 15,851.1 | 7,543.9 |
| Total | 161,245.1 | 222,403.0 | 236723.2 | Soap and toilet detergents | 4,837.3 | 0.0 | 0.0 |
| | | | | Others | 37,565.3 | 95,326.7 | 39,135.6 |
| | | | | Total | 371,292.7 | 360,528.5 | 349,571.3 |

Source: National Bureau of Statistics and respective industries



Consolidated Zonal Economic Performance Report

Annex 6c: Value of Selected Manufactured Commodities by Zone and Type

Millions of TZS

| South Eastern Zone | | | | Southern Highlands Zone | | | |
|---------------------------|---------------------|---------------------|---------------------|--------------------------------|---------------------|---------------------|---------------------|
| Commodity | Quarter ending | | | Commodity | Quarter ending | | |
| | Sep-21 ^r | Jun-22 ^r | Sep-22 ^p | | Sep-21 ^r | Jun-22 ^r | Sep-22 ^p |
| Rolled steel | 102,181.3 | 154,144.7 | 128,382.7 | Made (Black) tea | 22,351.3 | 22,235.4 | 22,572.7 |
| Soft drinks | 86,194.2 | 92,756.7 | 107,569.2 | Soft drinks (soda) | 80,103.4 | 75,437.5 | 89,329.1 |
| Ceramics | 88,757.9 | 77,914.5 | 92,657.1 | Cement | 29,229.0 | 29,922.5 | 31,093.9 |
| Cement | 86,673.6 | 93,764.8 | 88,984.4 | Paper craft | 14,881.4 | 17,105.4 | 16,179.4 |
| Washing powder | 24,774.0 | 19,569.3 | 40,631.3 | Bottled mineral water | 2,773.6 | 1,263.9 | 3,392.9 |
| Gypsum board | 15,675.7 | 33,185.0 | 27,273.7 | Beer | 66,114.4 | 45,875.0 | 66,723.9 |
| Electrical cable | 15,363.9 | 14,779.0 | 18,893.8 | Wattle extracts | 1,684.0 | 1,680.1 | 1,726.3 |
| Shoes | 8,257.7 | 14,028.6 | 18,284.4 | Pyrethrum | 6,443.9 | 5,700.5 | 6,152.8 |
| Diapers | 10,558.4 | 9,633.7 | 12,541.4 | Processed milk | 1,657.8 | 1,448.1 | 1,061.2 |
| Salt | 12,521.7 | 11,709.1 | 12,334.6 | Canned fruits and vegetables | 122.4 | 128.5 | 130.1 |
| Plastic articles | 6,285.0 | 7,725.8 | 7,958.5 | Other manufacturing* | 24,859.8 | 25,907.2 | 24,875.9 |
| Packaging material | 4,356.2 | 4,391.0 | 3,509.3 | Total | 275,893.0 | 246,731.1 | 292,070.2 |
| Sodium silicate | 1,778.5 | 3,067.9 | 2,861.4 | | | | |
| Nail | 1,308.2 | 1,143.4 | 2,733.8 | | | | |
| Transformer | 478.4 | 0.0 | 985.0 | | | | |
| Gypsum Powder | 739.0 | 6,213.7 | 926.0 | | | | |
| Corrugated iron sheets | 22.5 | 36.7 | 54.4 | | | | |
| Instant coffee | 1,773.7 | 0.0 | 0.0 | | | | |
| Leather | 45.0 | 0.0 | 0.0 | | | | |
| Total | 467,744.9 | 544,063.8 | 566,581.0 | | | | |

Source: National Bureau of Statistics and respective industries

Note: p denotes provisional data; and r, revised data